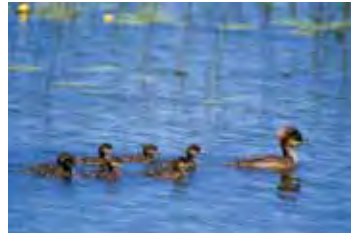


WELCOME !

PUBLIC OPEN HOUSE - 2006

- Thank you for taking time to visit this Open House
- Please fill out a Comment Sheet and leave it with us, or take it home and return it later to the address provided
- A project representative would be glad to answer your questions and if we don't know the answer we will try to get you an answer
- We value your comments and questions



Purpose of This Open House

PUBLIC OPEN HOUSE - 2006

- To introduce you to OPG's small hydro redevelopment plans for Wawaitin, Sandy Falls and Lower Sturgeon Generating Stations, the environmental assessment process and our plans for community consultation
- To seek your feedback at this early stage on local environmental considerations, issues or concerns that should be addressed through OPG's Class Environmental Assessment process



Who is Ontario Power Generation ?

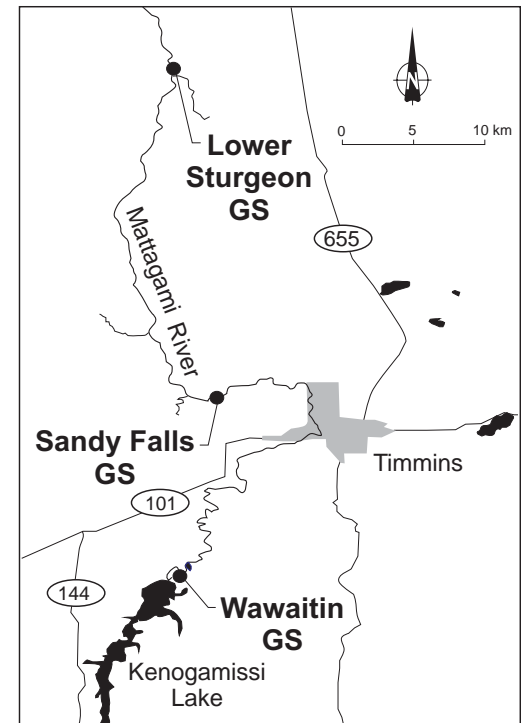
PUBLIC OPEN HOUSE - 2006

- **Ontario Power Generation Inc. (OPG) is an Ontario-based electricity generation company whose principal business is the generation of electricity in Ontario**
- **OPG focuses on the efficient production of electricity from our generation assets, while operating in a safe, open and environmentally responsible manner**
- **OPG is a commercial company, owned by the Province of Ontario – its sole shareholder**
- **Ontario needs more electricity and OPG has been given a mandate from the Province of Ontario to develop and expand its hydroelectric capacity**
- **This project will provide more clean renewable environmentally friendly electricity for Ontario**

What Is OPG Proposing To Do ?

PUBLIC OPEN HOUSE - 2006

- **Ontario Power Generation is proposing to redevelop the Wawaitin, Sandy Falls and Lower Sturgeon Generating Stations on the Upper Mattagami River**
- **These are existing run-of-the river hydroelectric generating stations that are approximately 100 years old and at the end of their service life**
- **The redevelopment of these facilities is subject to a provincial environmental assessment (EA)**



Why Redevelop These Facilities ?

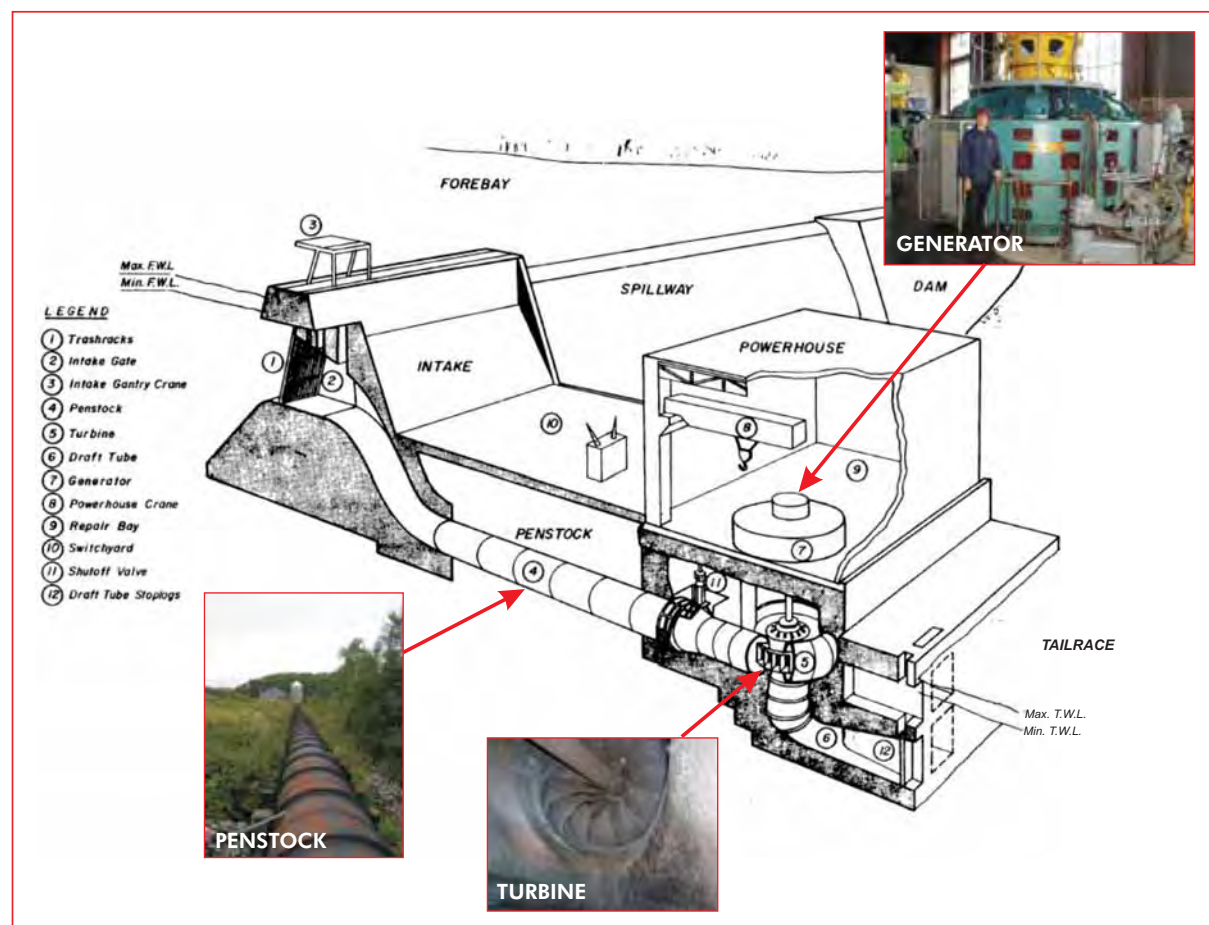
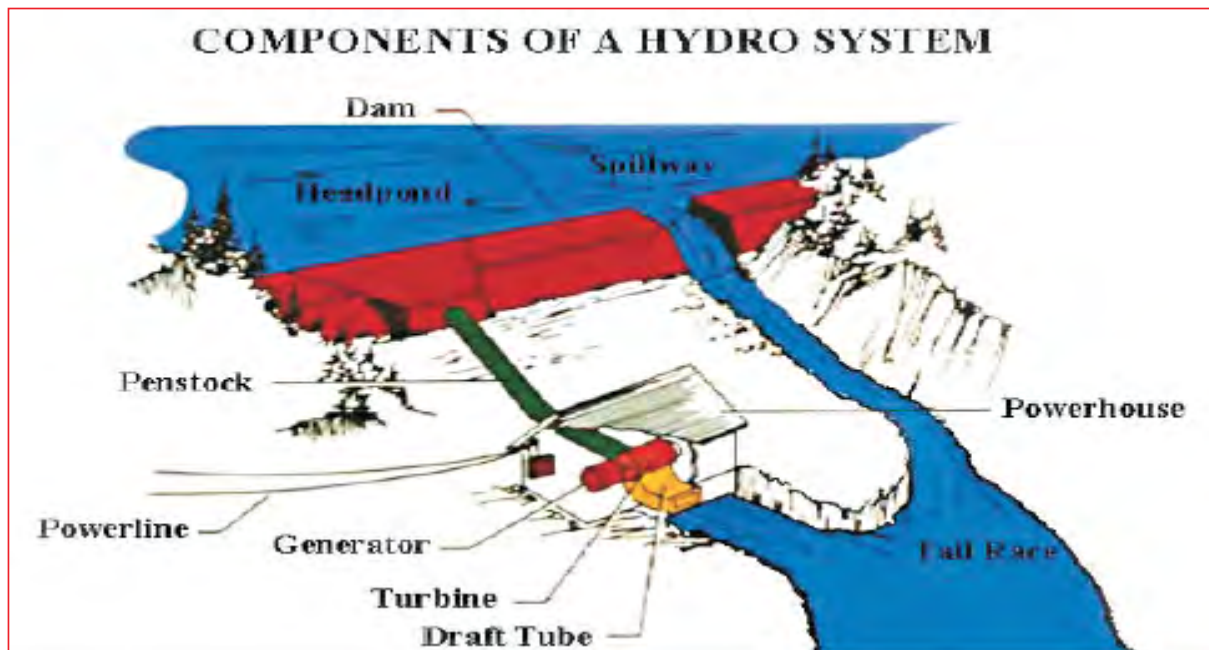
PUBLIC OPEN HOUSE - 2006

- All three generating stations are at the end of their current service life and require replacement
- These stations produce power at 25 cycles, however the Timmins area can no longer use 25 cycle power
- Ongoing maintenance of the generating stations will not provide a long-term reliable solution
- The redevelopment of these stations can continue to provide Ontario with a reliable, clean and renewable energy resource
- There is an opportunity to increase the power produced at these stations without changing the operating regime (water levels and flows) as described in the Mattagami River System Water Management Plan



Small Run-of-the River Hydroelectric Generating Stations

PUBLIC OPEN HOUSE - 2006



Wawaitin Generating Station

PUBLIC OPEN HOUSE - 2006

Existing

- Wawaitin Generating Station is owned and operated by OPG
- Built in 1912 by the Northern Ontario Power Company
- The powerhouse has 4 generating units with a maximum output of 10.4 megawatts
- Located within the City of Timmins municipal boundaries approximately 25 kilometres southwest of the urban centre

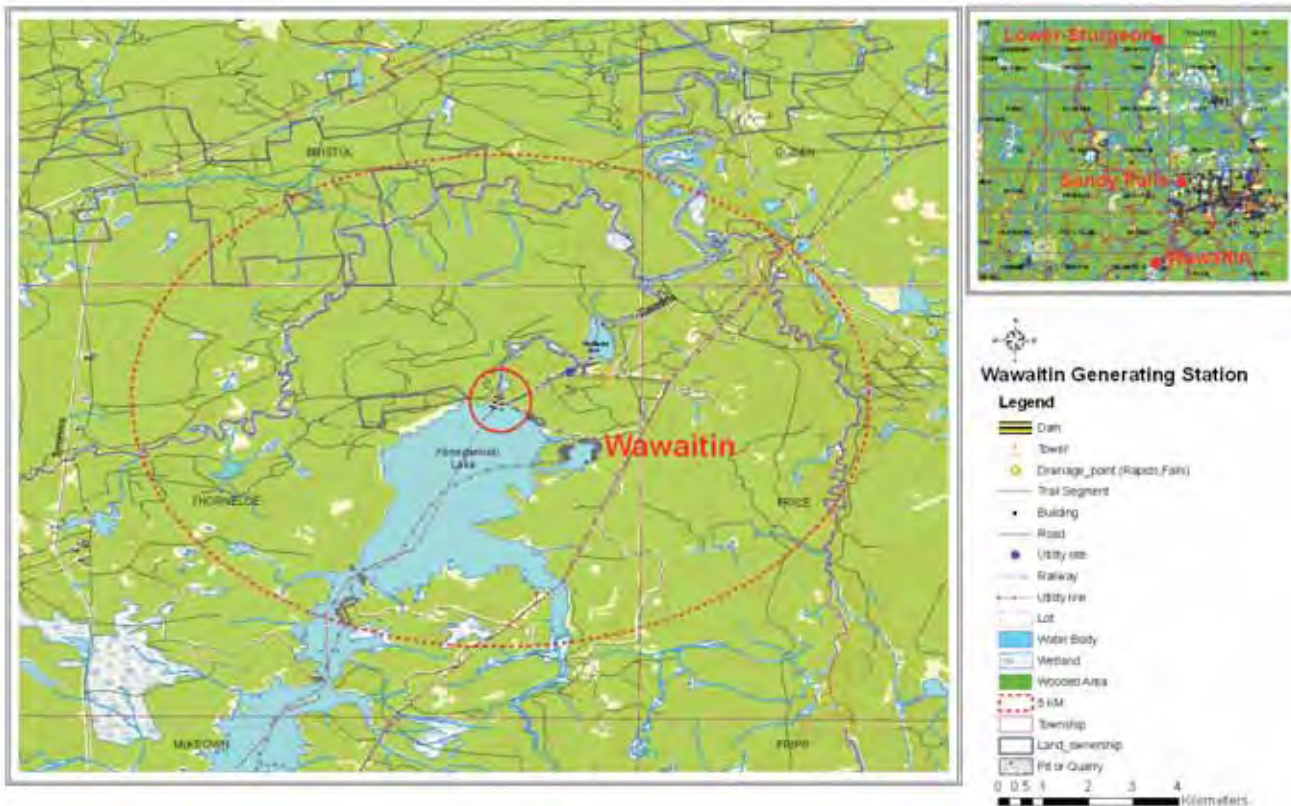


Proposed

- Wawaitin Generating Station is planned to be located adjacent to the existing powerhouse, with an expected total capacity of 13.5 megawatts
- Water in the existing intake canal would be conveyed through a new intake structure via a new steel penstock
Some refurbishment to the existing dams may be required
- Controlled for optimal energy production, while satisfying
- water level needs of Kenogamissi Lake cottagers and maintaining appropriate water levels in Timmins

Wawaitin Generating Station

PUBLIC OPEN HOUSE - 2006



Sandy Falls Generating Station

PUBLIC OPEN HOUSE - 2006

Existing

- Sandy Falls Generating Station built in 1911
- The generating station has three generating units that have a maximum rating of 3 megawatts
- Located within the City of Timmins municipal boundaries approximately 10 kilometres northwest of the urban centre accessed by municipal roads
- Water levels in the headpond are controlled by plant operation, in conjunction with a 216 metre long spillway weir dam across the Mattagami River
- Water levels are guided by the Water Management Plan and maintained to provide sufficient water for Timmins

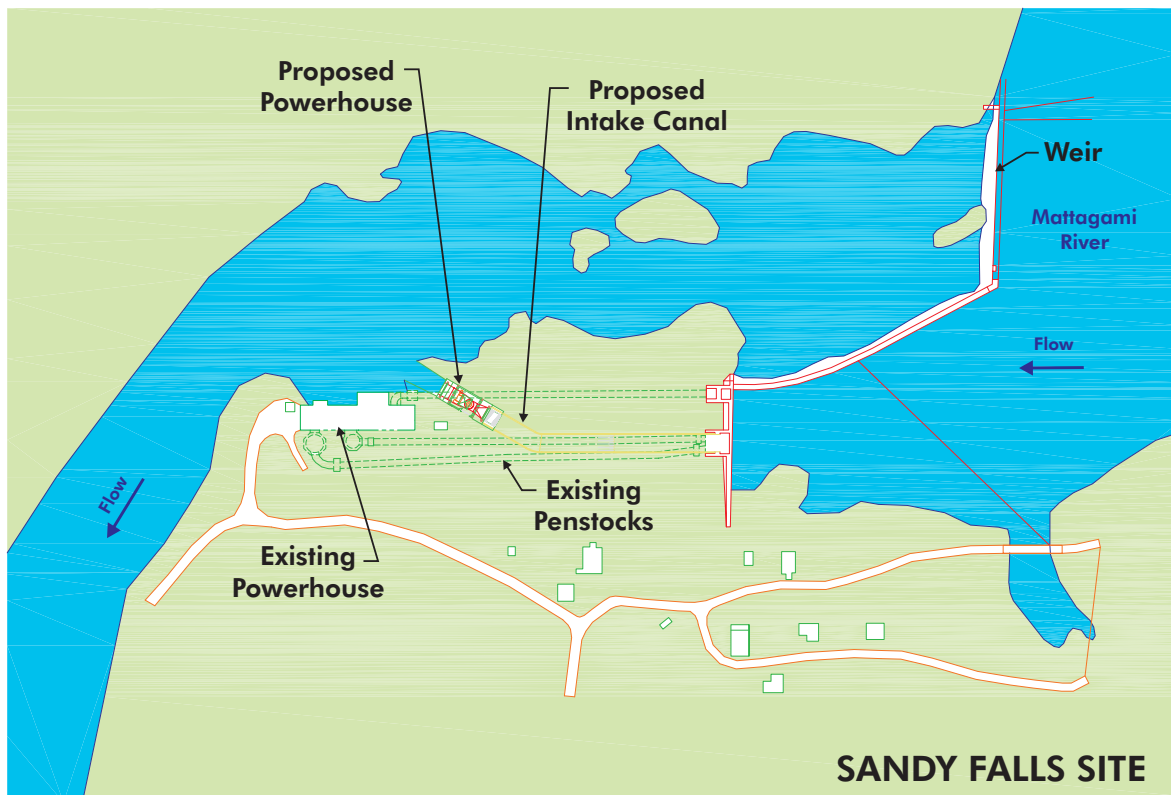
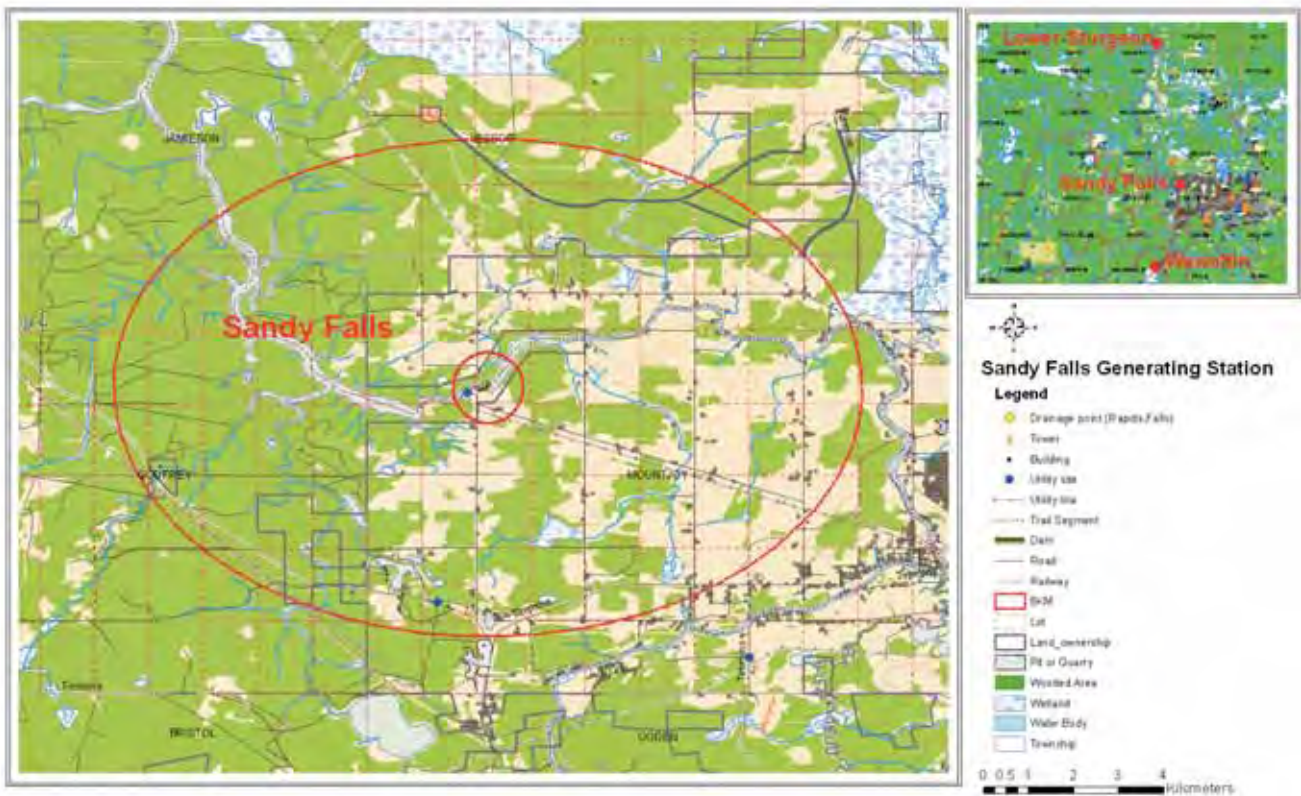


Proposed

- Sandy Falls Generating Station is planned to be located adjacent to the existing powerhouse
- New powerhouse is expected to enclose one generating unit with an expected capacity of 4.9 megawatts
- The intake structures and weir dam will need to be refurbished
- No change to water levels and flows

Sandy Falls Generating Station

PUBLIC OPEN HOUSE - 2006



Lower Sturgeon Generating Station

PUBLIC OPEN HOUSE - 2006

Existing

- The Lower Sturgeon Generating Station was built in 1923
- The Generating Station has two units with a maximum output of 6 megawatts
- This Generating Station is owned and operated by OPG as a run-of-the-river facility
- Located approximately 48 kilometres north of the City Timmins, accessed by a road west of Highway No. 655.
- As a run-of-the-river plant, there is no drawdown of the headpond. Any upstream water level fluctuations are the result of natural water levels and/or upstream controls or activities

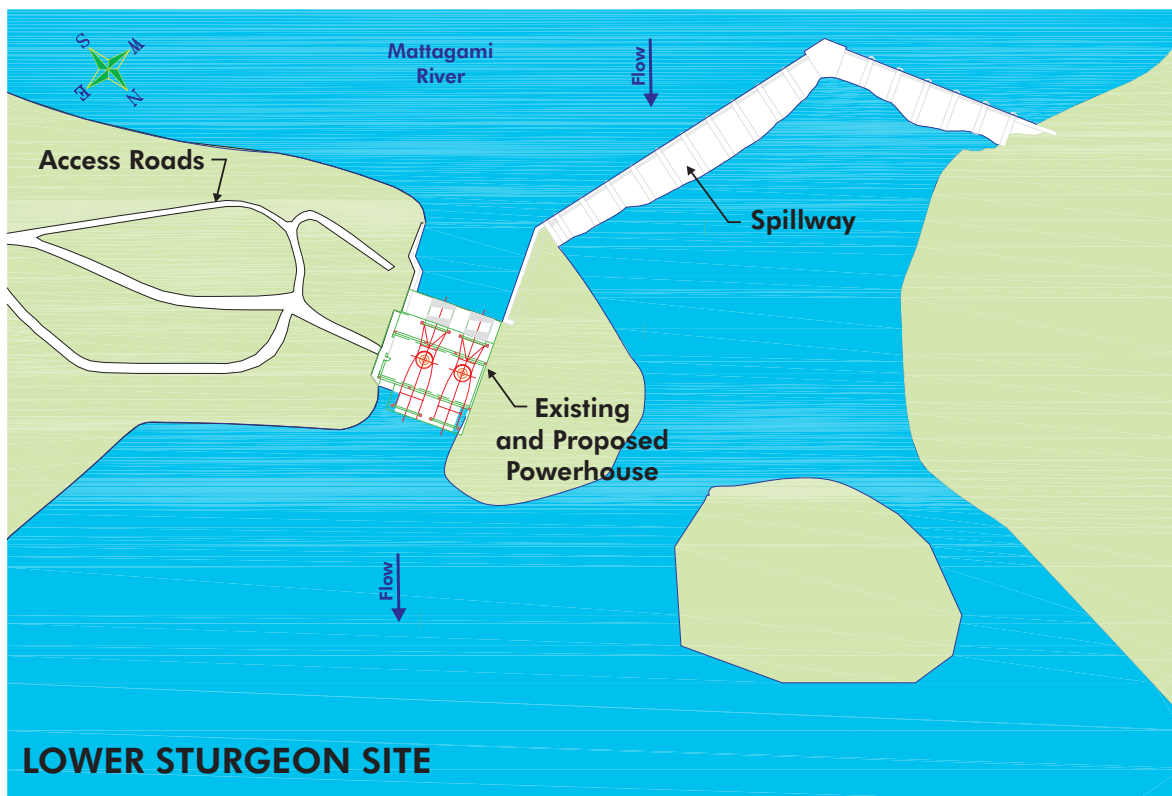
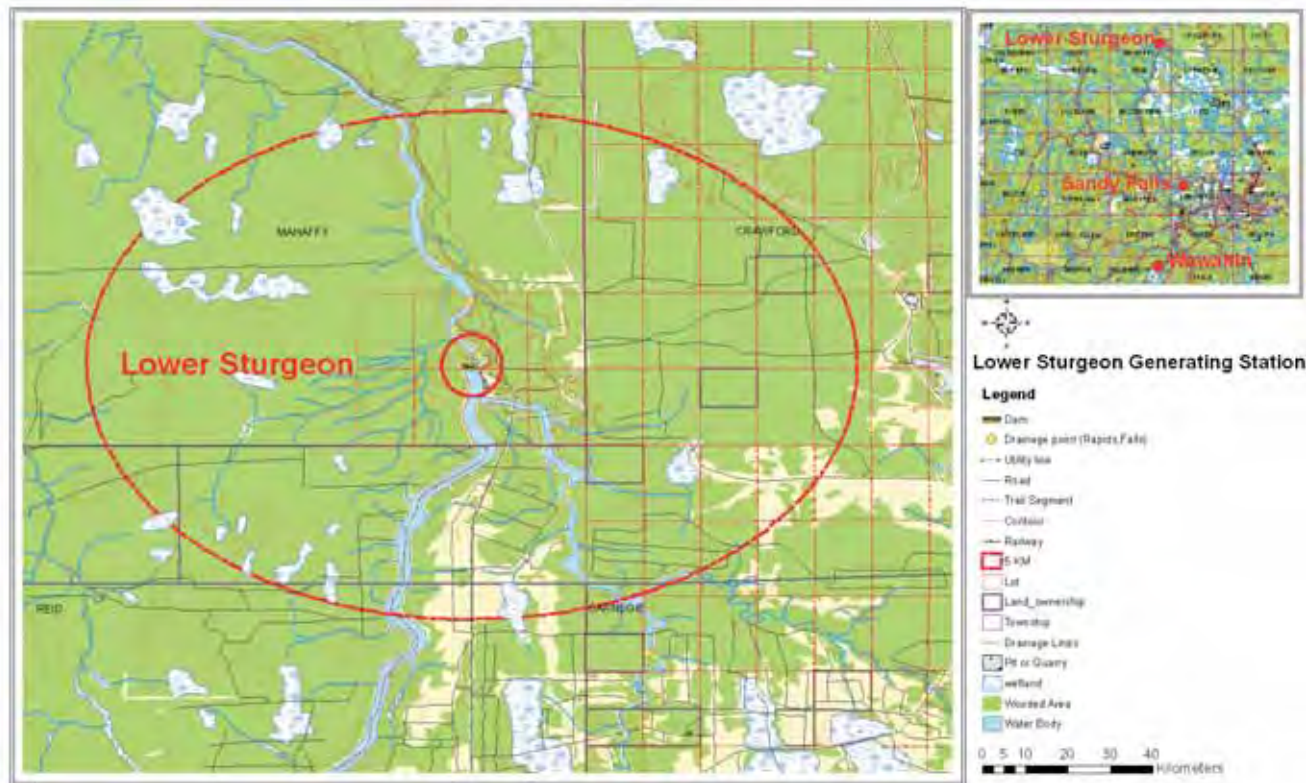


Proposed

- Lower Sturgeon Generating Station is planned to be located on the site of the existing powerhouse
- New powerhouse will have an expected station capacity of 8.9 megawatts
- No change to water levels and flows

Lower Sturgeon Generating Station

PUBLIC OPEN HOUSE - 2006



Environmental Assessment Process

PUBLIC OPEN HOUSE - 2006

- **Conducted according to OPG's Class Environmental Assessment for Modifications to Hydroelectric Facilities under the *Ontario Environmental Assessment Act (EA Act)***
- **Class EA Process is a three phase process**
 - ◆ **Phase 1** Involves the identification of the need or problem, analysis of alternatives and an assessment of the advantages and disadvantages of the alternatives
 - ◆ **Phase 2** Involves the detailed environmental assessment. Studies are carried out on the natural, social and economic implications of the project
 - ◆ **Phase 3** Is project implementation. The project is implemented and monitoring is carried out to ensure conformance with mitigation commitment and predicted environmental effects



Environmental Assessment Process

PUBLIC OPEN HOUSE - 2006

- **The EA will examine the following components:**
 - ◆ **Aquatic Environment (water, fish and other aquatic life)**
 - ◆ **Terrestrial Environment (adjacent trees, vegetation and fauna)**
 - ◆ **Socio-Economic Environment (local economy, local social and economic uses)**
 - ◆ **First Nations (e.g., uses and values)**
 - ◆ **Archaeological and Built Heritage (archaeological, building or structural resources)**
 - ◆ **Atmospheric Environment (air and noise)**
 - ◆ **Geology and Soils**
- **Field work associated with assessing the effects has been initiated and additional studies will be carried out in 2006**
- **The effects of the project both during the construction and operation phases will be assessed**
- **Measures to mitigate, eliminate and reduce negative effects will be identified**
- **Measures to enhance positive effects will be identified**

Government Agencies Involved

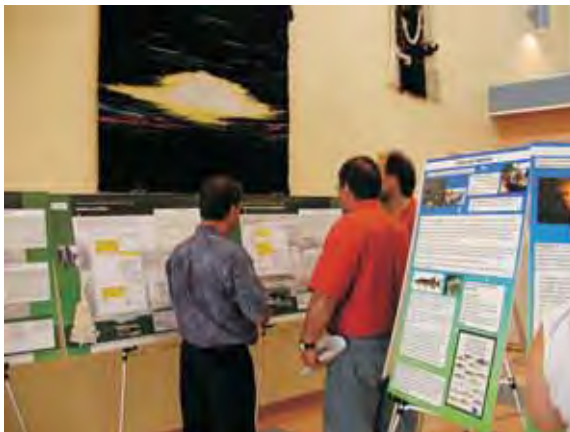
PUBLIC OPEN HOUSE - 2006

- **Ontario Ministry of the Environment (MOE) is the lead agency for the review of the EA**
- **Other provincial ministries involved will include:**
 - ◆ Ministry of Natural Resources (all aspects of the environment)
 - ◆ Ministry of Culture (built heritage and archaeology)
 - ◆ Ministry of Municipal Affairs and Housing (land use)
- **The federal agencies involved include:**
 - ◆ Canadian Environmental Assessment Agency
 - ◆ Fisheries and Oceans Canada
 - ◆ Environment Canada
 - ◆ Transport Canada
- **Federal authorities are also reviewing the project to determine whether a federal environmental assessment is required**
- **The main interests of the federal government are fish habitat and navigable waters but can also include other areas of federal interest (e.g., migratory birds)**

Public Consultation

PUBLIC OPEN HOUSE - 2006

- **Public consultation is a key component of carrying out OPG's Class Environmental Assessment**
- **OPG is committed to consulting with residents, community organizations, government departments and agencies and First Nations**
- **Two Main Public Consultation Open Houses (April and early fall)**
- **Fall Open House will present results from the Studies**



We Value Your Opinion

PUBLIC OPEN HOUSE - 2006

- Please take the time to ask questions and complete the Comment Sheets

PUBLIC COMMENT SHEET
FOR ENVIRONMENTAL ASSESSMENT OF THE PROPOSED REDEVELOPMENT OF THE
GENERATING STATION

Do you have any comments about the proposed re-development of the Generating Station?

Are you aware of any significant environmental, social or economic feature or value near these sites that we need to have consideration for?

Do you have any other comments about the project that you would like to identify?

Please provide your contact information below:

Name: _____ Postal Code: _____

Street Address: _____ Email: _____

_____ Phone number: _____

City: _____ Fax: _____

If you have any questions or comments about the project in the future please contact either:

Ed Dobrowski, Project Manager
700 University Avenue, #101 C16
Toronto, Ontario, M5G 1A6
Telephone: (416) 592-2266
e-mail: info@houshulde-va.com

Phil Shantz, Senior Planner
SWES Consultants Limited
121 Glenora Drive
Richmond Hill, Ontario, L4B 3K4
Telephone: (905) 764-4380
e-mail: info@houshulde-va.com

ONTARIO POWER
GENERATION



Water Management Planning

PUBLIC OPEN HOUSE - 2006

- In 2001, the Ministry of Natural Resources introduced Water Management Planning to Ontario
- This planning is a consultative process that co-ordinates the MNR, OPG and local stakeholders to explore sustainable solutions for water resources management
- In 2002, considerable progress was made in developing water management plans for provincially regulated river systems
- Inter-provincial and international river systems are governed by other agreements and treaties. As part of the process, Steering, Planning and Public Advisory Committees were established to develop plans for river systems connected to OPG's Northeast Plant Group
- OPG fully supports Water Management Planning and has incorporated this process into its long-term business plans
- The process provides guidelines that will assist OPG in balancing each region's unique social, cultural and recreational interests with OPG's business mandate to generate safe, reliable and economically competitive electricity
- The proposed redevelopment will continue to operate as a run-of-the-river facility and be managed so that there is no change to the water levels and flows