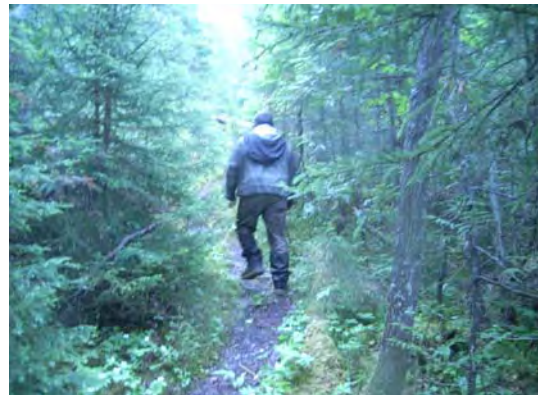


WELCOME

Open House

- Thank you for taking time to visit this Open House.
- Please fill out a Comment Sheet and leave it with us, or take it home and return it later to the address provided.



- A project representative will be glad to answer your questions.
- Your input and comments are an important contribution to helping us develop an environmentally responsible project.

Purpose of this Open House

Open House

- To introduce you to Ontario Power Generation Inc.'s (OPG) and Coral Rapid Power's LP (CRP) plans to develop a hydroelectric generating station on New Post Creek.



New Post Creek Today

- To seek your feedback at this early stage on local environmental considerations, issues or concerns that should be addressed through the environmental assessment process.



Who is Ontario Power Generation?

Open House

- OPG is an Ontario-based electricity generation company whose principal business is the generation of electricity in Ontario.
- OPG focuses on the efficient production of electricity from its generation assets, while operating in a safe, open and environmentally responsible manner.
- OPG is a commercial company, owned by the Province of Ontario – its sole shareholder.
- OPG has been given a mandate from the Province of Ontario to develop and expand its hydroelectric capacity.
- This Project will provide more clean, reliable and renewable electricity for Ontario.



ONTARIO POWER
GENERATION

Who is Coral Rapids Power?

Open House

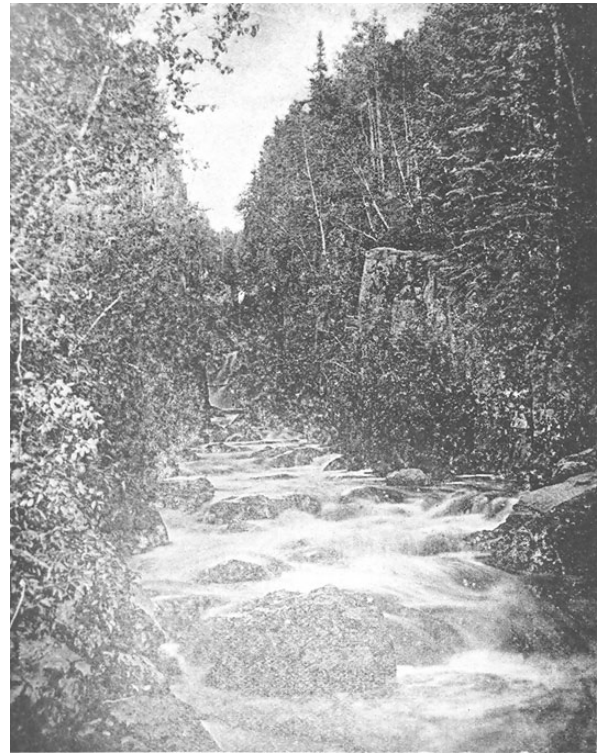
- Coral Rapids Power (CRP) is a company formed and wholly owned by the Taykwa Tagamou Nation (TTN).
- CRP was incorporated by the TTN Chief and Council in 2004 as a vehicle to carry out potential commercial activities related to electricity generation.
- CRP's purpose is to enter into the electricity generation business in Ontario.
- In April 2006, a Memorandum of Understanding was signed between Ontario Power Generation Inc. (OPG) and the Taykwa Tagamou Nation (TTN) to jointly explore hydroelectric development opportunities within the Abitibi River drainage basin, north of Highway 11.
- As a result of this initiative, a potential waterpower generation location was identified on New Post Creek.
- A Grievance Settlement was completed in November 2007 which included a Partnership Term Sheet Agreement between OPG and CRP to move forward with a potential development of the New Post Creek Project. Subsequently in December 2008 the Partnership Agreements were signed.



History of New Post Creek

Open House

- New Post Creek, or Cheepilloya Sebee as it is known in Cree (English translation: Great Partridge River) played an important role in the lives of the people of the Taykwa Tagamou Nation (TTN).
- As the only source of fresh, clear water fed from muskeg in the area, it was a popular camping spot for TTN families who were travelling to and from the Bad River system for fishing, hunting and trapping.
- TTN members have indicated that the Creek was only navigable by canoe for most of its length during the spring runoff, and sometimes during the fall after significant rain events. A short portage route which tracks close to the Hudson Bay Company (HBC) site was used to bypass New Post Creek Falls and access the Abitibi River.
- According to TTN elders, In the summer the flow of New Post Creek below the falls was often just a trickle. It is likely that the creek would have had a flow of 1 or 2 cubic meters per second (cms).
- In 1963 flows were diverted from the Little Abitibi River into New Post Creek to increase flow and therefore generation at Otter Rapids Generating Station.



Original New Post Creek



Otter Rapids Generating Station

New Post Creek Today

Open House

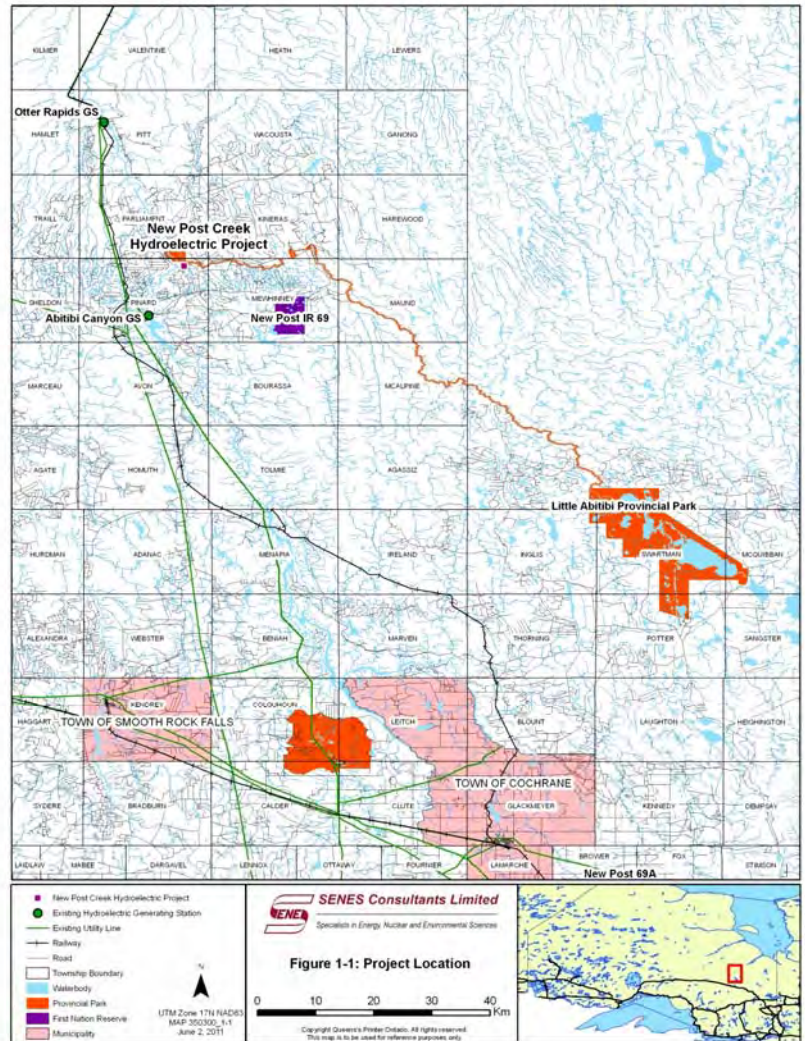
- The original diversion has significantly altered the Creek.
- Today, flows on New Post Creek and the Abitibi River are regulated by the Abitibi River System Water Management Plan.



Project Location

Open House

- The proposed New Post Creek Project is located in the District of Cochrane within the Geographic Township of Pinard.
- Approximately 100 kilometres (km) north of the Town of Smooth Rock Falls, 13 km northeast of Abitibi Canyon Generating Station and 20 km south of Otter Rapids Generating Station.
- A small part of the Project is currently within Little Abitibi Provincial Park (LAPP).
- The proposed generating station would be located on Abitibi River shore lands with the intake at New Post Creek approximately 6 km upstream of its outlet to the Abitibi River.



General Location



What are OPG and CRP Proposing?

Open House

- A new hydroelectric generating station with a capacity in the order of 25 Megawatts (MW) that would produce enough electricity to meet the needs of 25,000 homes (approximately 125 Gigawatt hours (GWh)).
- The proposed intake and spillway would be located about 4 km upstream of New Post Creek Falls and would divert a portion of New Post Creek flows through turbines that would discharge through a powerhouse located on the east shore of the Abitibi River.
- The project is located about 10 km downstream from the Abitibi Canyon Generating Station.
- The proposed Project will consist of the following primary project components/structures:
 - ◆ Intake and spillway structures located on New Post Creek;
 - ◆ Water conveyance system that includes shallow buried penstocks and possibly a portion of open water canal;
 - ◆ Powerhouse structure with multiple generating units located on the Abitibi River; and,
 - ◆ Switchyard and approximately 7 km transmission line that would cross the Abitibi River.
- The engineering team is currently optimizing the design of the Project. This includes the design of the spillway and intake structures, as well as forebay levels. The extent of shoreline to be inundated upstream of the intake is being assessed as part of this exercise.



General Location of the Intake
on New Post Creek



General Location of the Powerhouse
and Tailrace on the Abitibi River

Environmental Assessment Process

Open House

- Under the provincial *Environmental Assessment Act*, the Proposed Undertaking is subject to the Class Environmental Assessment (Class EA) for Waterpower Projects as a new project on a managed waterway.
- A federal screening environmental assessment is also required.
- The Class EA planning process requires CRP and OPG to evaluate the positive and negative environmental effects of the Proposed Undertaking and prepare an Environmental Report.
- The Class EA will examine the following components:
 - ◆ Aquatic Environment (impact on fish habitat/ movement and impacts on other aquatic life)
 - ◆ Terrestrial Environment (habitat and flora and fauna)
 - ◆ Socio-Economic Environment (local economy, local social and economic use)
 - ◆ First Nations, Métis and Aboriginal communities (e.g. rights, values, uses and interests) and
 - ◆ Archaeological Resources.



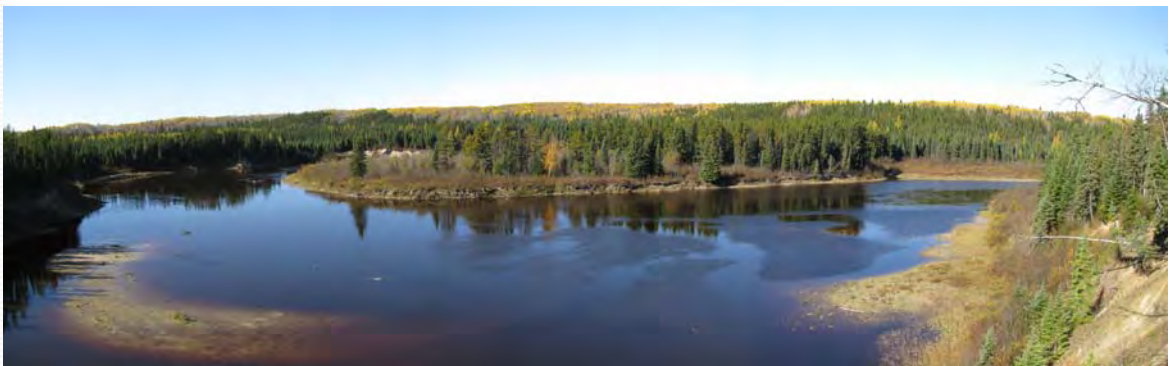
Copies of the Class EA are available from www.owa.ca



Proposed Project and Little Abitibi Provincial Park

Open House

- To carry out the Proposed Undertaking the deregulation of a small portion of the Little Abitibi Provincial Park is needed to align with requirements of the Provincial Parks and Conservation Reserves Act, 2006.
- Replacement lands adjacent to the Park boundary have been identified resulting in a larger Park and enhanced ecological integrity.
- TTN and OPG were involved in the process to determine these replacement lands.
- The Class EA for Waterpower Projects process will be coordinated with the Ontario Ministry of Natural Resources Crown land use amendment and Class EA process to amend the park boundary for the Proposed Undertaking.



Other Facilities

Open House

This Project may require a number of other facilities, such as:

- A temporary construction camp to service workers.
- The construction camp would be in place for 2 to 3 years.
- Upgrading of access roads to the proposed Generating Station Site.
- A concrete batch plant for construction.
- 7 km transmission line to connect the generating station to the grid.



Existing access road to the Site

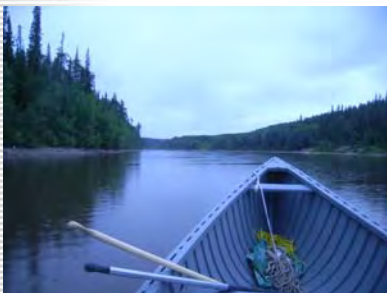
Operations

Open House

- The final operating regime for the Project will be determined during the Class EA and Water Management process.
- OPG, CRP and the relevant government agencies will need to agree to a minimum spring spawning compensation flow and a minimum year round flow.
- These flow requirements are expected to balance off fisheries considerations, economic feasibility and TTN's historic interests and concerns.
- The Project will not change the total volume of water flowing into the Abitibi River.



Water Management Plan
for the Abitibi River System



Environmental Assessment Studies

Open House

- Preliminary field work associated with assessing the environmental effects was initiated in 2009.
- More comprehensive field work was carried out in 2010 and 2011.
- The effects of the Project during construction and operation are now being assessed.
- Measures to avoid, prevent, eliminate, reduce, mitigate and compensate for negative effects will be identified.
- Measures to enhance positive effects will also be identified.



Field research underway in the study area

Aquatic and Fisheries Assessment

Open House

- Fisheries field work was initiated in 2009 to assess habitat, fish community and fish spawning locations.
- Fisheries field work was expanded in 2011 to further assess habitat, fish community and spawning locations, and also assess mercury levels in fish.
- Above the Falls, New Post Creek has a simple and sparse fish community.
- Below the Falls some walleye and sturgeon spawning has been noted.
- Whitefish spawning was not observed over the 3 year period.
- CRP and OPG are committed to working with all interested people on mitigating and compensating as appropriate, the possible effects of the Project on the aquatic environment.



Terrestrial Environment

Open House

- Terrestrial environment studies are being carried out on all areas impacted by the Project (e.g., generating station, transmission line).
- The studies include assessing the Project's potential impact on:
 - ◆ caribou
 - ◆ moose
 - ◆ forest birds
 - ◆ raptors
 - ◆ waterfowl
 - ◆ aquatic feeding areas
 - ◆ vegetation
 - ◆ Species at Risk



Socio-Economic Assessment

Open House

- Except for the portion of the Project that occurs within Lake Abitibi Provincial Park the Project occurs on general crown use land area that permits hydroelectric development and most other resource uses.
- Most of the lands adjacent to the Project have been subjected to other resource activities such as forest harvesting and road building.
- New Post Creek is rarely used as a canoe route but the base of the New Post Creek Falls (via Abitibi River) is visited occasionally by tourists, canoeists and anglers.
- The environmental assessment will consider how the Project affects other users of crown land such as: forest management, mineral exploration/mining, recreational activities and trapping.
- An economic assessment is being completed to assess the effects of increased employment on the region.



Cultural Heritage Assessment

Open House

- Assessment of the Project's impact on cultural heritage is being carried out according to the *Ontario Heritage Act*.
- Areas studied included all areas proposed for development.
- Cultural heritage field work is being done in conjunction with the Taykwa Tagamou Nation.

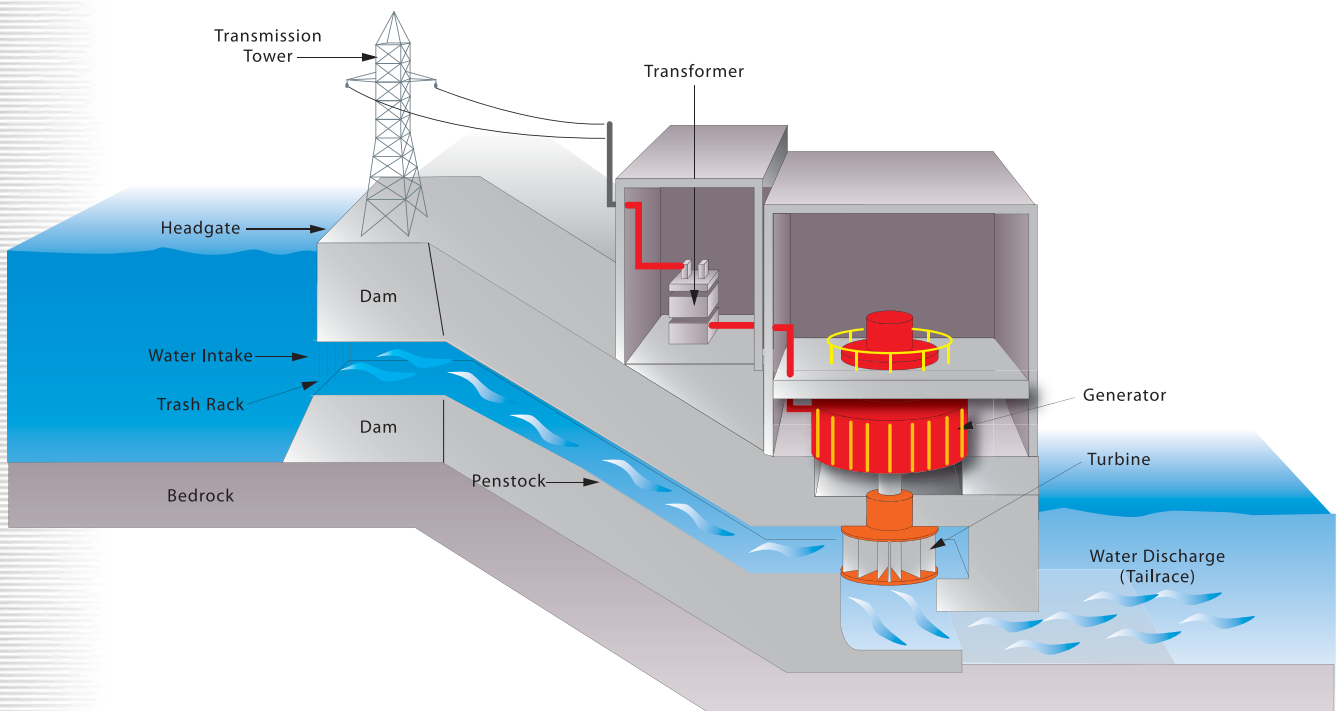


Archaeological Team and TTN Members
Investigating the Project Area, 2011

How Hydroelectric Power Works

Open House

- Hydroelectric power stations convert the kinetic energy of falling water into electrical energy.
- Hydroelectric stations use either the natural drop of a river, such as a waterfall, or a dam built across a river to raise the water level and provide the drop (head) needed to create a driving force.
- Water is collected at the top of the dam in what is called the forebay. From there, the water flows into a pipe called a penstock which carries it down to a turbine water wheel.
- The water pressure increases as it flows down the penstock. The pressure and flow of the falling water drives a turbine which in turn spins a generator.
- This creates electricity that can be sent to the transmission grid.



We Value Your Opinion

Open House

- Please take the time to ask questions and complete the Comment Sheets.
- Consultation is a key component of the EA process as it provides you with an opportunity to contribute and inform decisions relating to the Project.
- CRP and OPG will be hosting two rounds of formal public Open Houses:
 - ◆ This Open House will introduce the Project and obtain your feedback.
 - ◆ Second Open Houses in 2012 will present results from various studies and field work.
- Meetings and consultation activities will also be held with First Nations, Métis and other Aboriginal communities.
- We would like to know if there are any important environmental or social values, interests or concerns you might have about the Project.
- There will be additional opportunities for you to participate in the EA process. Please indicate your interests on the Comment Sheet.

PUBLIC COMMENT SHEET	
FOR THE ENVIRONMENTAL ASSESSMENT OF THE NEW POST CREEK HYDROELECTRIC PROJECT	
Ontario Power Generation Inc. (OPG) and Coral Rapids Power are proposing to develop approximately 25 megawatts of renewable hydroelectric power through the construction of a generating station on New Post Creek near the Abitibi River.	
Do you have any comments about the proposed New Post Creek Project?	
<hr/> <hr/> <hr/>	
Are you aware of any particular environmental, social or economic features or values near the New Post Creek Project that we should be aware of?	
<hr/> <hr/> <hr/>	
Do you have any other comments, questions, concerns or issues about the project?	
<hr/> <hr/> <hr/>	
Would you like to receive a call from a team member about your questions, concerns or issues?	
Yes No	
In the event that OPG holds another event about the project, would you like to be added to the mailing list?	
Yes No	
Please provide your contact information below (please print):	
Name: _____	Postal Code: _____
Street Address: _____	Email: _____
City: _____	Phone Number: _____
	Fax: _____
If you have any questions or comments about the project in the future please contact:	
Phil Shantz Manager - Aboriginal, Land, Resource and Northern Projects SENES Consultants Limited 121 Grenville Drive, Unit 12 Richmond Hill, Ontario L4B 3N4 pschantz@senes.ca	
Project Information: www.newpostcreek.com	
Please drop the comments in the box provided or send to Phil Shantz no later than December 24, 2011.	

