



Lennox Solar Project

Welcome to our Second Public Community Meeting

August 2015





About OPG

OPG was created in 1999 from the assets of Ontario Hydro



- OPG's generating portfolio has a total capacity of over 16,000 megawatts (MW)
 - 2 Nuclear Stations
 - 3 Thermal Stations
 - 65 Hydroelectric Stations
- OPG is allowed to participate in the Large Renewable Procurement (LRP)
- Solar projects are one of the best short to medium term growth opportunities for OPG:
 - OPG's market share has been shrinking (coal closure)
 - Limited demand for new generation in the Province
 - New revenue stream (from Green Energy)
- Allows OPG to leverage and utilize existing sites
- OPG is bidding this project as part of the Independent Electricity System Operator (IESO) LRP I

Who is SunEdison?

SunEdison is dedicated to transforming the way energy is generated, distributed, and owned around the globe. We manufacture solar technology and develop, finance, install, own and operate solar and wind energy power plants. SunEdison is one of the world's largest renewable energy asset managers and provides asset management, operations and maintenance, monitoring and reporting services for its renewable energy customers around the world.



SunEdison is the World's Largest Renewable Energy Developer

- Formed in 1959
- Listed on NYSE (SUNE), Member of Fortune 1000
- 5,600+ employees in 35 global locations
- Manufacturing plants on 3 continents
- Over 5 GW of wind and solar interconnected

Innovation and Technology Leader

- Over 750 patents awarded
- Leading the next generation of solar panel performance and cost reduction with the world's lowest cost silicon via HP-FBR technology and the world's most efficient n-type silicon via proprietary CCZ technology

Leader in Utility Scale Power Plants

Wind. Solar. A complete clean energy platform. SunEdison works with the world's leading utilities to help them meet their clean generation needs.

Global and Financial Leader

- Over \$5.6 Billion in structured solar financing
- Original inventor of the Power Purchase Agreement (PPA)
- Leading finance partners

SunEdison in the Community Engagement:

Committed to open and honest communications with stakeholders.

Committed to working closely with local Municipalities and First Nation and Métis Communities.

Rural Electrification: Publicly committed to electrifying 20 million people by 2020.

Gender Diversity: Committed to attracting top women executives, providing career growth opportunities, mentorship, and ensuring family friendly office policies.



Large Renewable Procurement (LRP)

- Solar generation in Ontario will grow from 2% of installed capacity in 2013 to 8% in 2025.
- The Ministry of Energy has directed the IESO to develop a Large Renewable Procurement (LRP) program for projects over 500 kW.

LTEP - Renewable Energy Competitive Procurement Targets (Ministry of Energy, 2013)				
	Wind	Solar	Bioenergy	Hydroelectric
LRP I (2014-2015)	300 MW	140 MW	50 MW	75 MW
LRP II (2015-2016)	300 MW	140 MW	50 MW	45 MW
LRP III (2016)	TBD	TBD	TBD	TBD

TBD based on capacity re-allocated from projects not procured or developed through previous procurements.

- The Solar procurement process is highly competitive with 32 applicants qualifying to submit proposals into the LRP.
- Multi-faceted evaluation criteria
- The LRP timeline:
 - Proposals submitted to IESO in September 2015
 - Decision on what projects proceed expected December 2015



Site Considerations Information

The following table outlines where site considerations information required by the LRP process can be found on the maps:

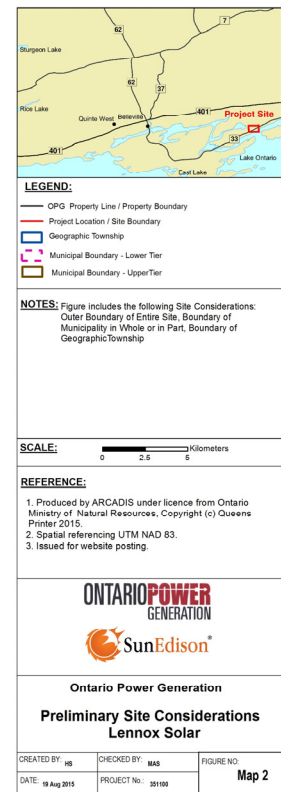
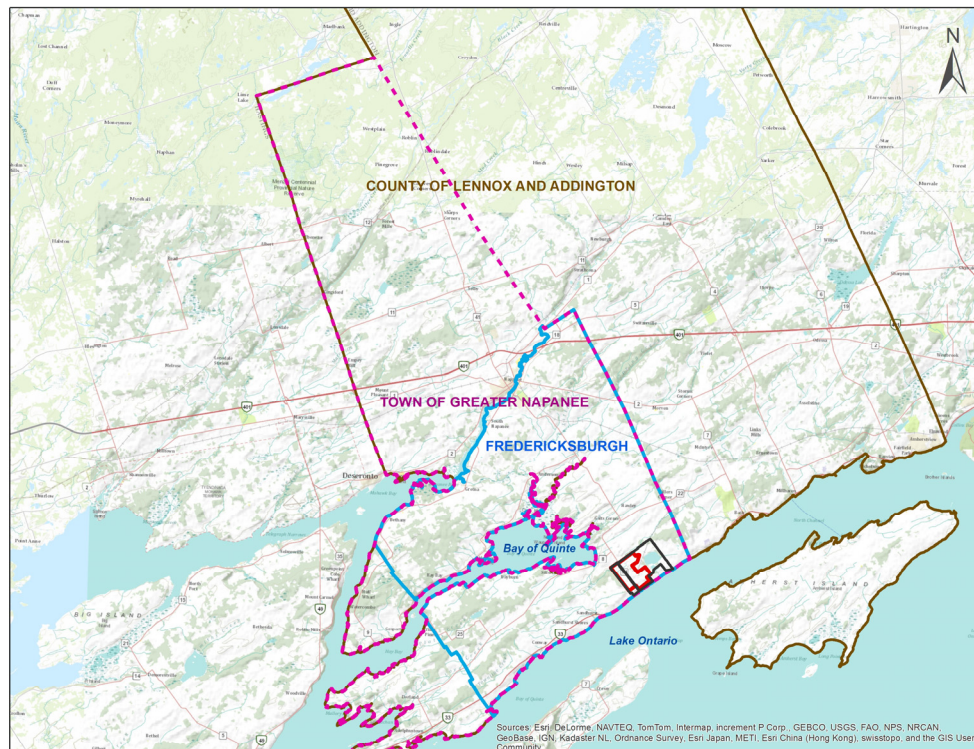
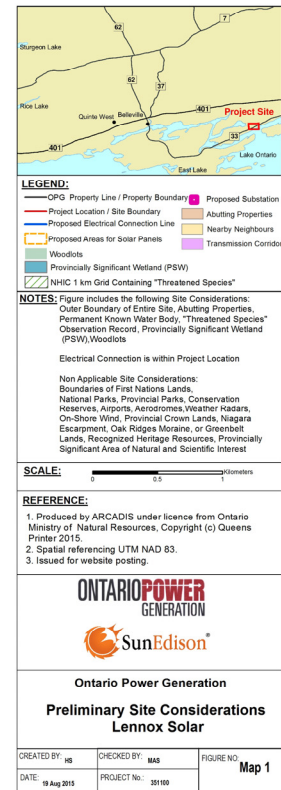
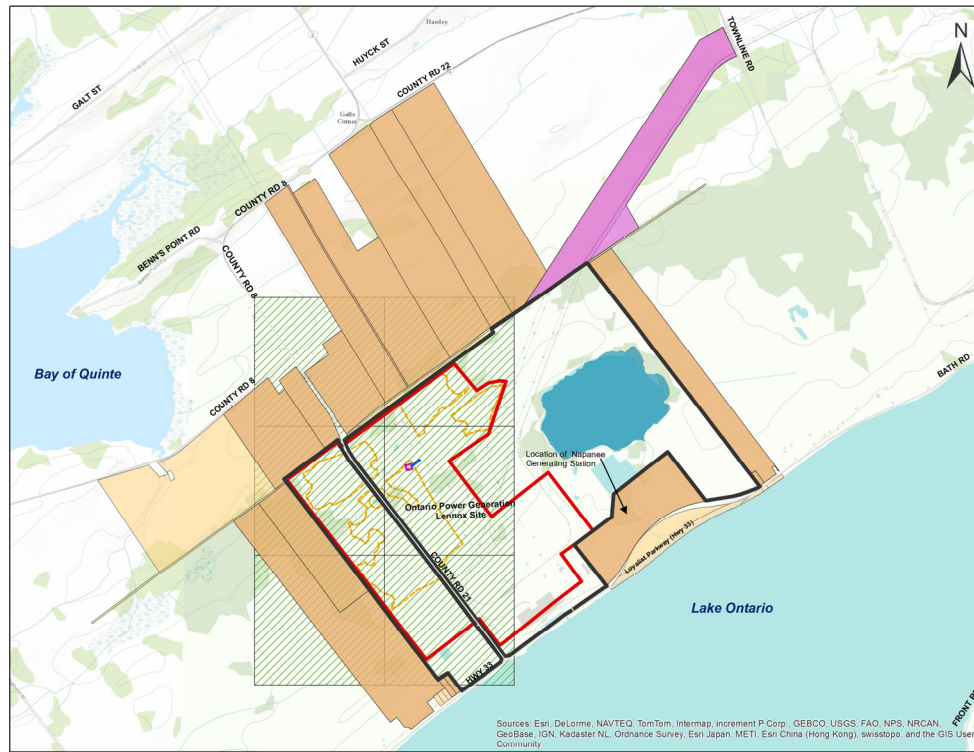
Site Considerations Information	Map Location
Site location and extent of property	See Map 1
Proposed Connection Lines and Points	See Map 4
Proposed location of Key features of the project	See Map 5
Municipal boundaries	See Map 2
Boundaries of First Nations Land on which site or connection line is to be located	The project and proposed connection line does not affect boundaries of First Nations Land
Boundaries of geographic township in which project is located	See Map 2
Highways (as defined by Highway Traffic Act) within 5 km of the project site	See Map 3
Railways within 5 km of project site	See Map 3
National park, provincial park, and or conservation reserves located within 120 metres of site or proposed connection line	None of these features are located within 120 m of the site or proposed connection line
Any airports, aerodromes and weather radar within 5km of the site or the proposed connection line.	None of these features are located within 5 km of the site or proposed connection line
Property boundaries for each site on which project and proposed connection line are situated and all properties abutting these properties	See Map 1
Any permanent known water body located within 120 m of the site and proposed connection line	See Map 1
If project is to utilize on-shore wind	Not applicable
If project is to be located on crown lands	Not applicable
If project and proposed connection line is to be located within <ul style="list-style-type: none"> a Natural Heritage Information Centre 1km grid square which contains endangered or threatened species observations within 120 m of a provincially significant area of natural and scientific interest within 120 m of a known provincially significant wetland within or abutting an area designated in the plan approved under the Niagara Escarpment Planning and Development Act, the Oak Ridges Moraine Conservation Act, the Green belt Act and the Lake Simcoe watershed or abutting a recognized heritage resource 	See Map 1

Note: Information for Site Considerations Mapping is from the following electronic sources:

- World Topographic Map hosted by ESRI, including boundaries, cities, water features, physiographic features, parks, landmarks, transportation, and buildings.
- Land Information Ontario open database, as provided by the Ontario Ministry of Natural Resources and Forestry.
- Geowarehouse – Title Search Ontario and Land Titles.
- Heritage Resource locations were provided by municipal, provincial and federal heritage planners with jurisdiction over the Project Property Boundaries. The Large Renewable Energy Project and proposed Connection line are not located within or Abutting a recognized heritage resource.

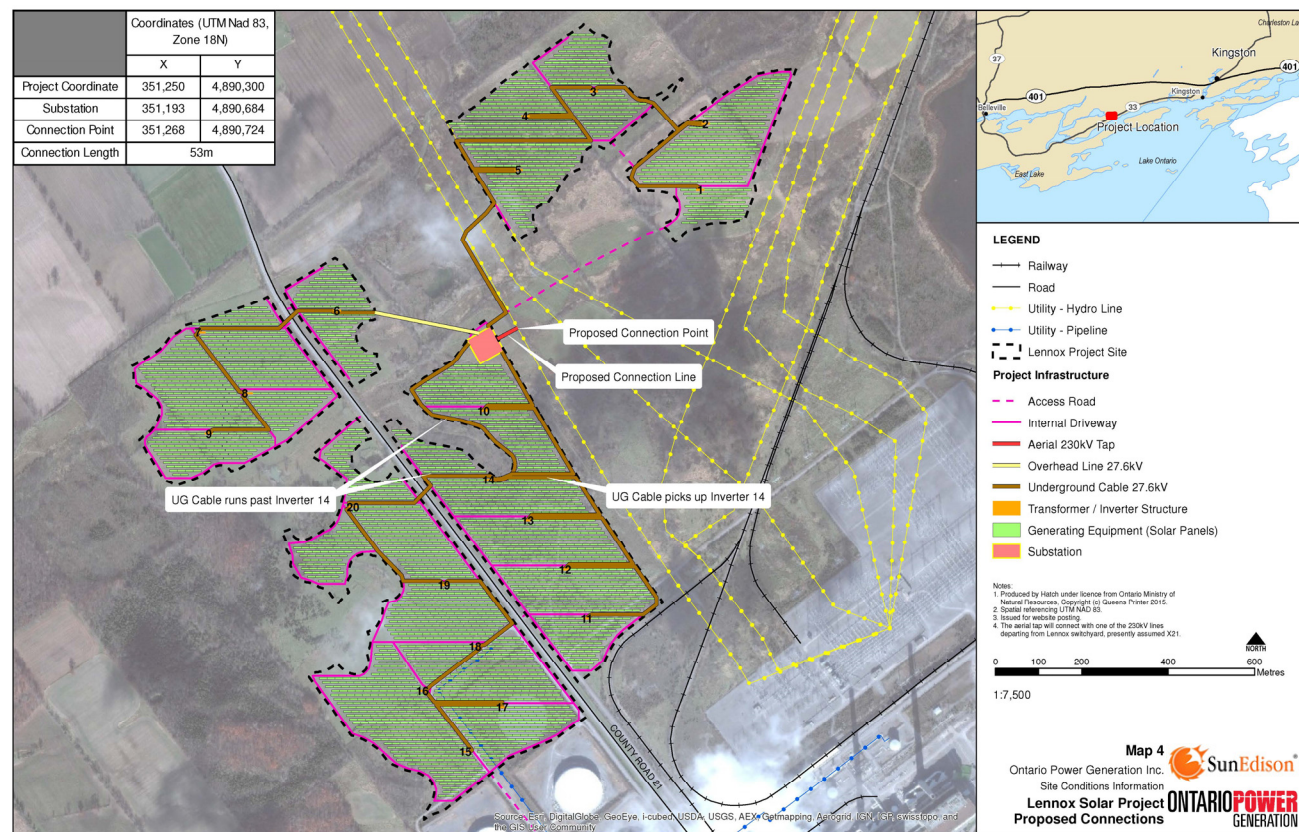
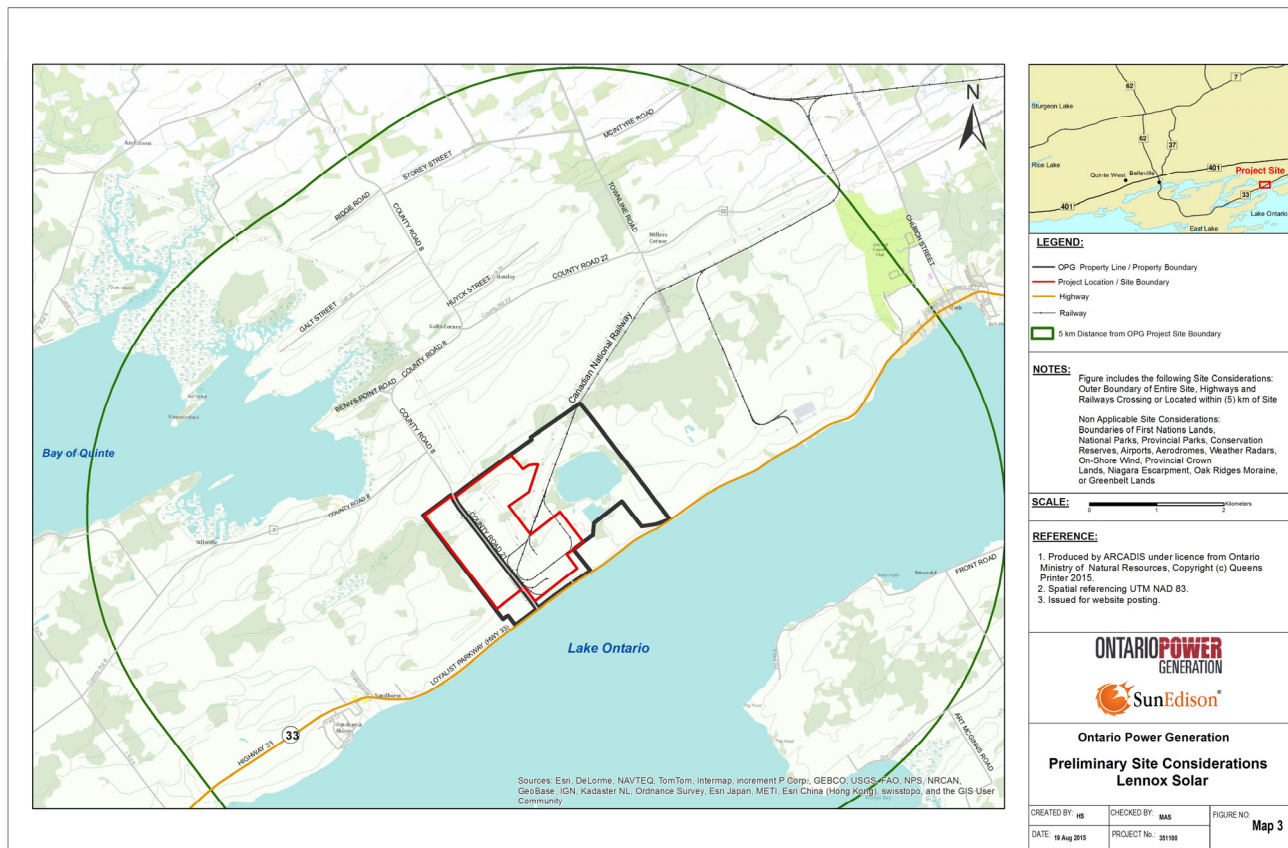


Site Considerations Maps



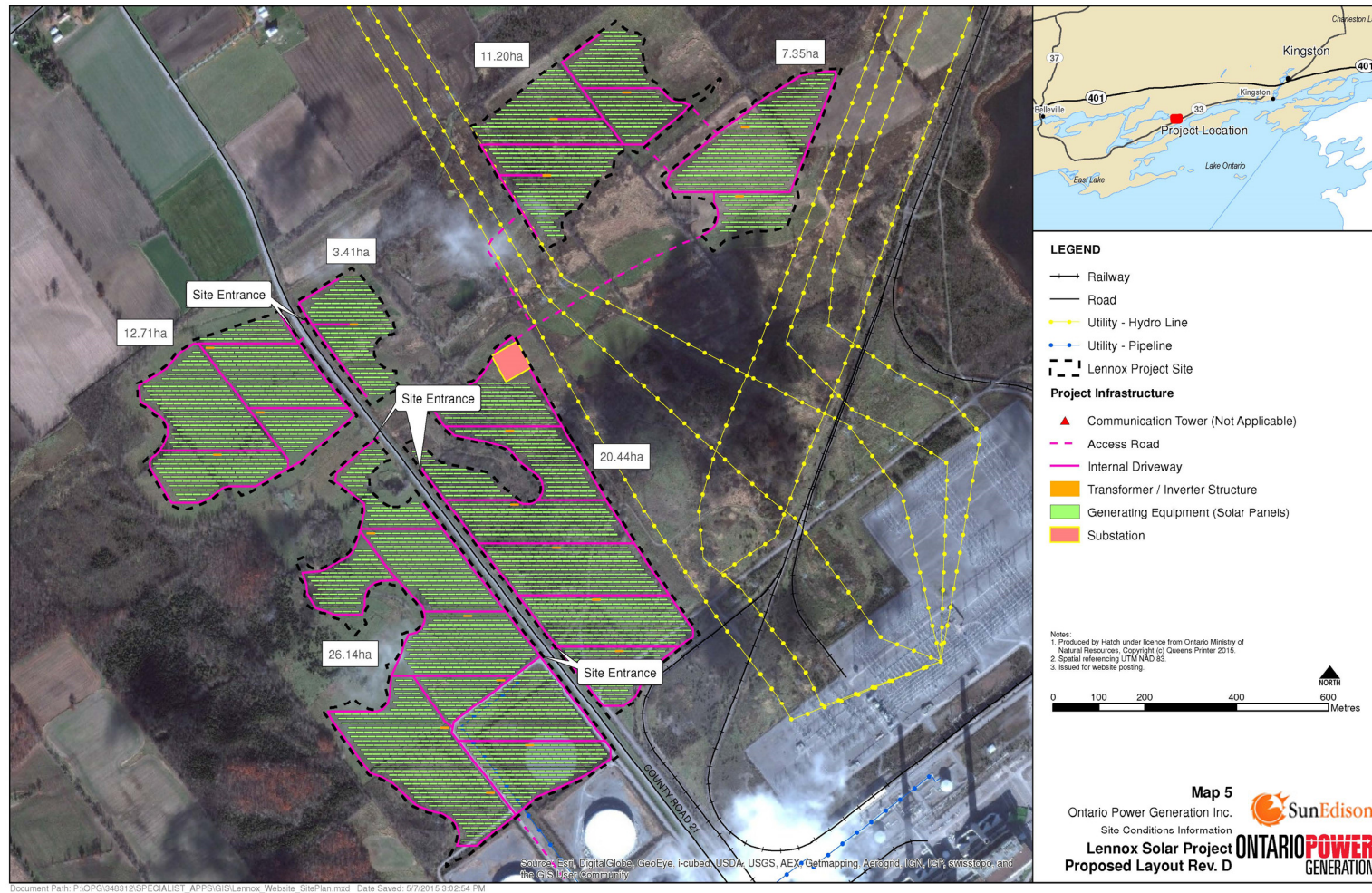


Site Considerations Maps





Site Considerations Maps



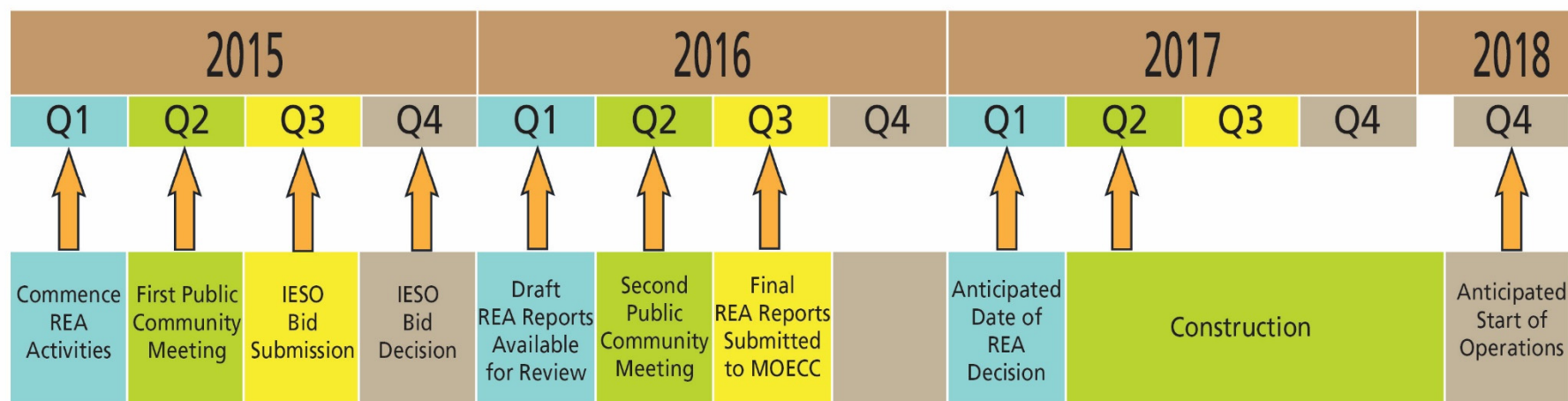


Preliminary Project Schedule



ONTARIOPOWER
GENERATION

PRELIMINARY PROJECT SCHEDULE



* All dates are subject to change



ONTARIOPOWER
GENERATION