



Lennox Solar Project

Welcome to our First Public Community Meeting

June 2015

ONTARIO**POWER**
GENERATION



Meeting Objectives

- To introduce the community to the proposed Solar Project, and the related processes that are taking place
 - Large Renewable Procurement (LRP I)
 - Renewable Energy Approval (REA)
- To provide the community with the opportunity to share with OPG their interests, concerns, input, questions, ideas with respect to the Solar Project

Public consultation will occur throughout both concurrent processes



About OPG

OPG was created in 1999 from the assets of Ontario Hydro



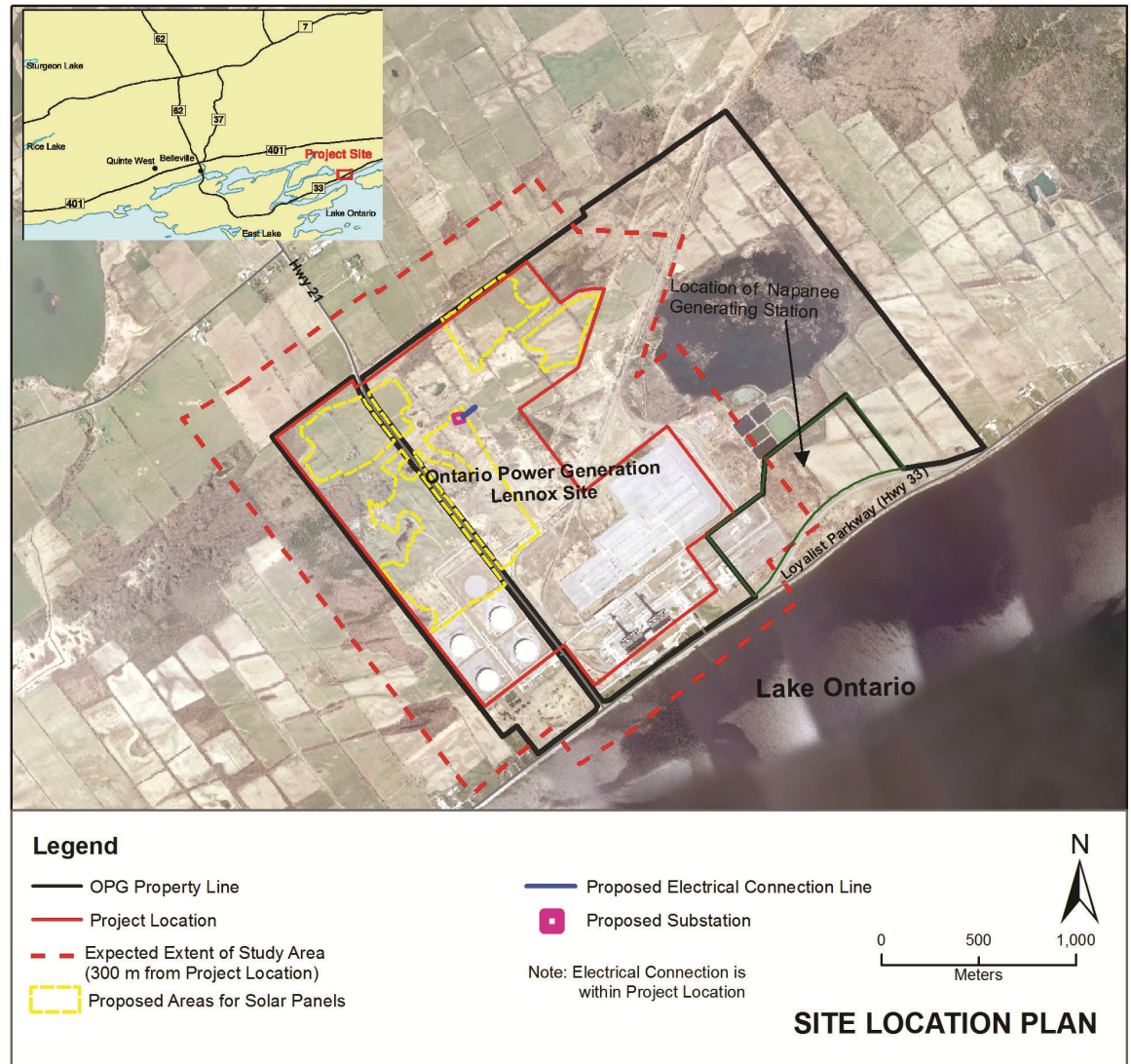
- OPG's generating portfolio has a total capacity of over 16,000 megawatts (MW)
 - 2 Nuclear Stations
 - 3 Thermal Stations
 - 65 Hydroelectric Stations
- OPG is allowed to participate in the Large Renewable Procurement (LRP)
- Solar projects are one of the best short to medium term growth opportunities for OPG:
 - OPG's market share has been shrinking (coal closure)
 - Limited demand for new generation in the Province
 - New revenue stream (from Green Energy)
- Allows OPG to leverage and utilize existing sites
- OPG is bidding this project as part of the Independent Electricity System Operator (IESO) LRP I

ONTARIO POWER
GENERATION



Site Location Plan

- OPG is proposing to design, build and operate up to a 40 MW Solar Energy Project in the Town of Greater Napanee
- To be located within six areas of the existing Lennox GS site





Large Renewable Procurement (LRP)

- Solar generation in Ontario will grow from 2% of installed capacity in 2013 to 8% in 2025.
- The Ministry of Energy has directed the IESO to develop a Large Renewable Procurement (LRP) program for projects over 500 kW in which OPG can participate.

LTEP - Renewable Energy Competitive Procurement Targets (Ministry of Energy, 2013)				
	Wind	Solar	Bioenergy	Hydroelectric
LRP I (2014-2015)	300 MW	140 MW	50 MW	75 MW
LRP II (2015-2016)	300 MW	140 MW	50 MW	45 MW
LRP III (2016)	TBD	TBD	TBD	TBD

TBD based on capacity re-allocated from projects not procured or developed through previous procurements.

- The Solar procurement process is highly competitive with 32 applicants qualifying to submit proposals into the LRP.
- Multi-faceted evaluation criteria
- The LRP timeline:
 - Proposals submitted to IESO in September 2015
 - Decision on what projects proceed expected December 2015



Site Considerations Information

The following table outlines where site considerations information required by the LRP process can be found on the maps:

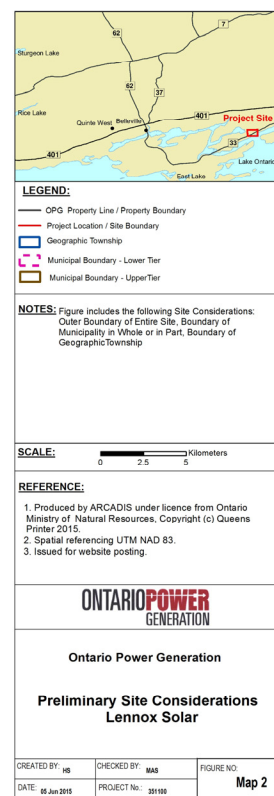
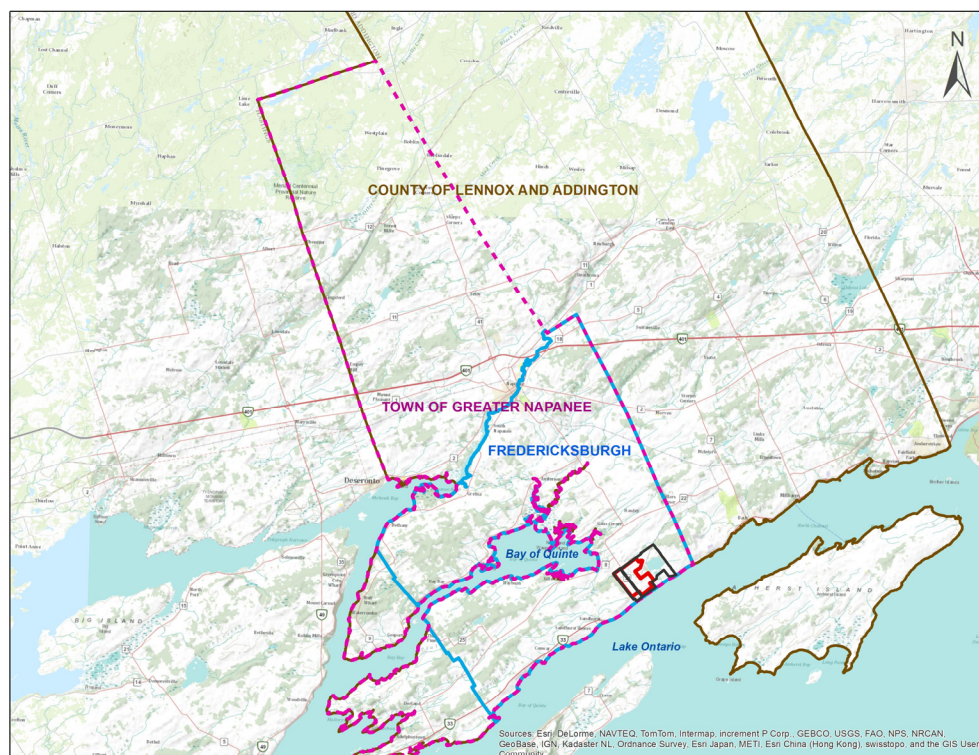
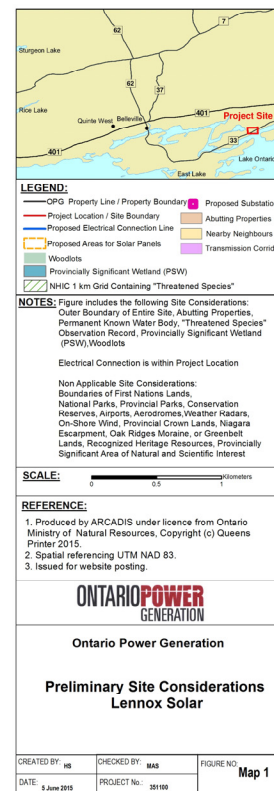
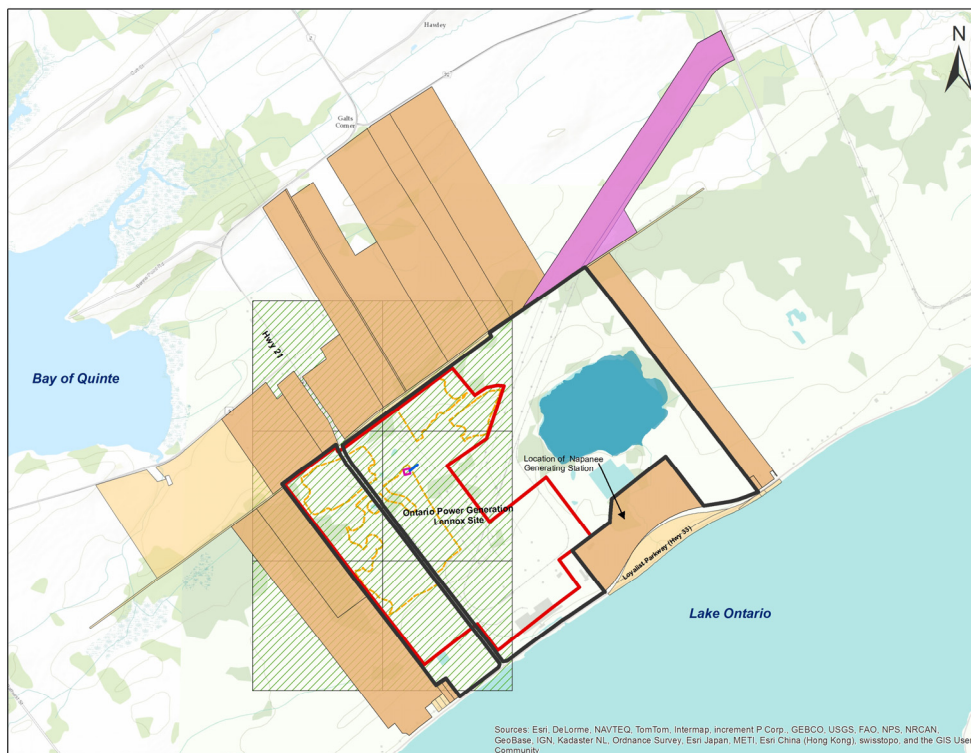
Site Considerations Information	Map Location
Site location and extent of property	See Map 1
Proposed Connection Lines and Points	See Map 4
Proposed location of Key features of the project	See Map 5
Municipal boundaries	See Map 2
Boundaries of First Nations Land on which site or connection line is to be located	The project and proposed connection line does not affect boundaries of First Nations Land
Boundaries of geographic township in which project is located	See Map 2
Highways (as defined by Highway Traffic Act) within 5 km of the project site	See Map 3
Railways within 5 km of project site	See Map 3
National park, provincial park, and or conservation reserves located within 120 metres of site or proposed connection line	None of these features are located within 120 m of the site or proposed connection line
Any airports, aerodromes and weather radar within 5km of the site or the proposed connection line.	None of these features are located within 5 km of the site or proposed connection line
Property boundaries for each site on which project and proposed connection line are situated and all properties abutting these properties	See Map 1
Any permanent known water body located within 120 m of the site and proposed connection line	See Map 1
If project is to utilize on-shore wind	Not applicable
If project is to be located on crown lands	Not applicable
If project and proposed connection line is to be located within <ul style="list-style-type: none"> a Natural Heritage Information Centre 1km grid square which contains endangered or threatened species observations within 120 m of a provincially significant area of natural and scientific interest within 120 m of a known provincially significant wetland within or abutting an area designated in the plan approved under the Niagara Escarpment Planning and Development Act, the Oak Ridges Moraine Conservation Act, the Green belt Act and the Lake Simcoe watershed or abutting a recognized heritage resource 	See Map 1

Note: Information for Site Considerations Mapping is from the following electronic sources:

- World Topographic Map hosted by ESRI, including boundaries, cities, water features, physiographic features, parks, landmarks, transportation, and buildings.
- Land Information Ontario open database, as provided by the Ontario Ministry of Natural Resources and Forestry.
- Geowarehouse – Title Search Ontario and Land Titles.
- Heritage Resource locations were provided by municipal, provincial and federal heritage planners with jurisdiction over the Project Property Boundaries. The Large Renewable Energy Project and proposed Connection line are not located within or Abutting a recognized heritage resource.

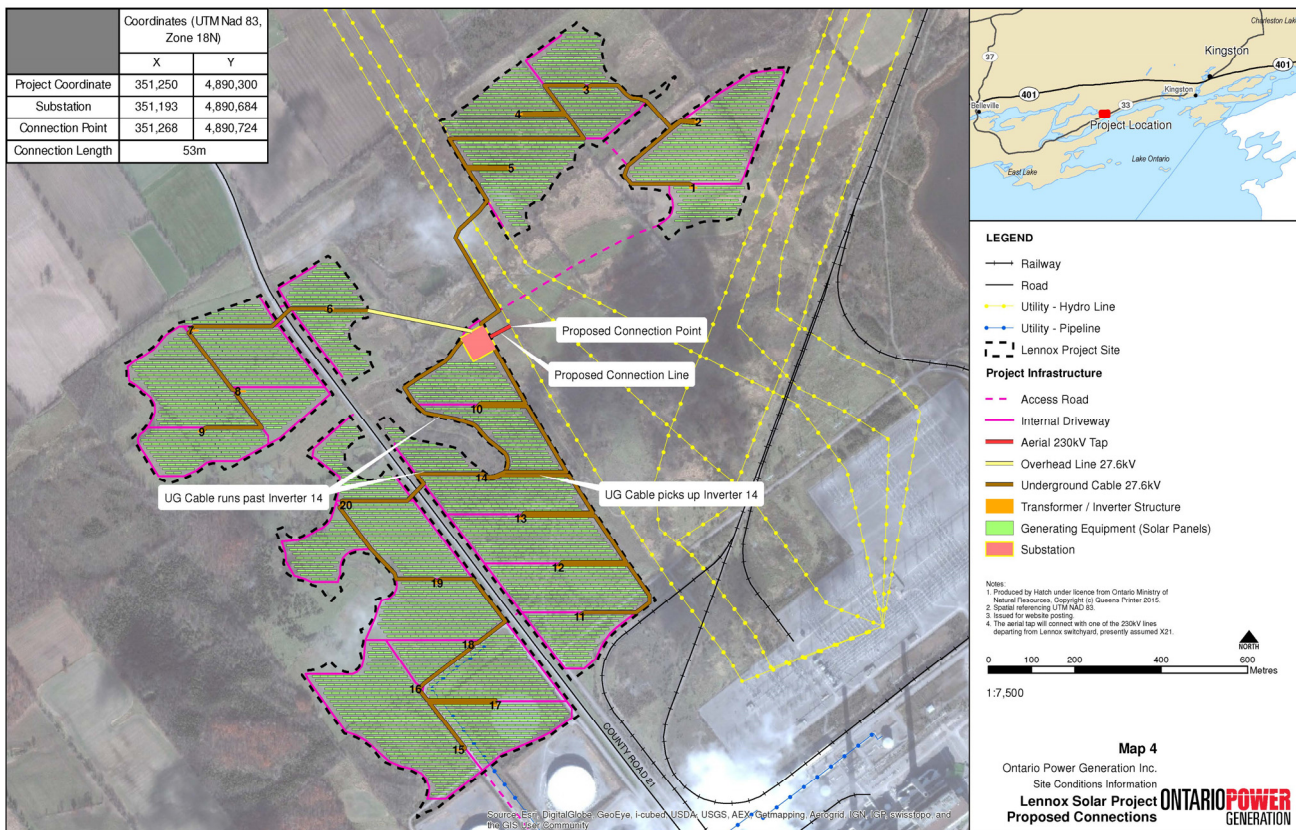
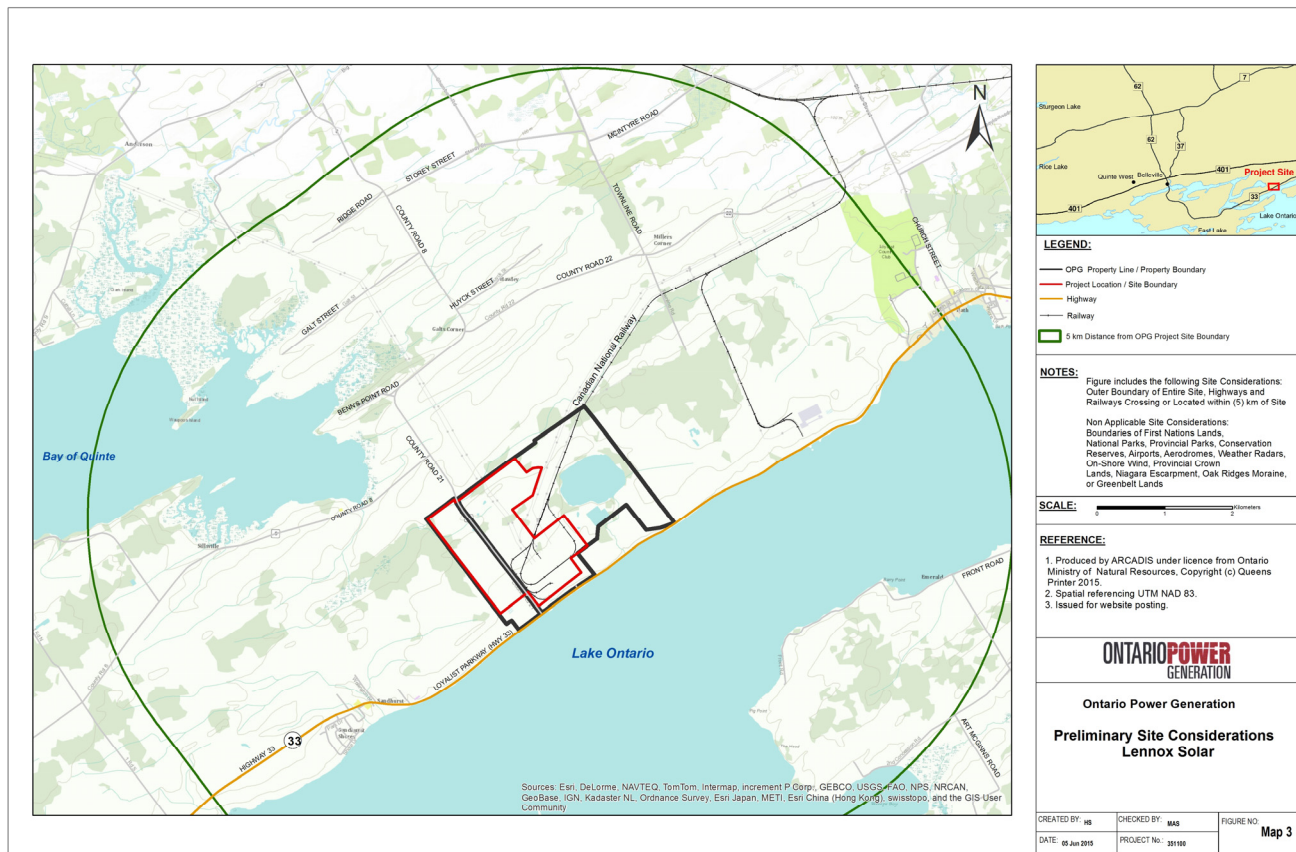


Site Considerations Maps



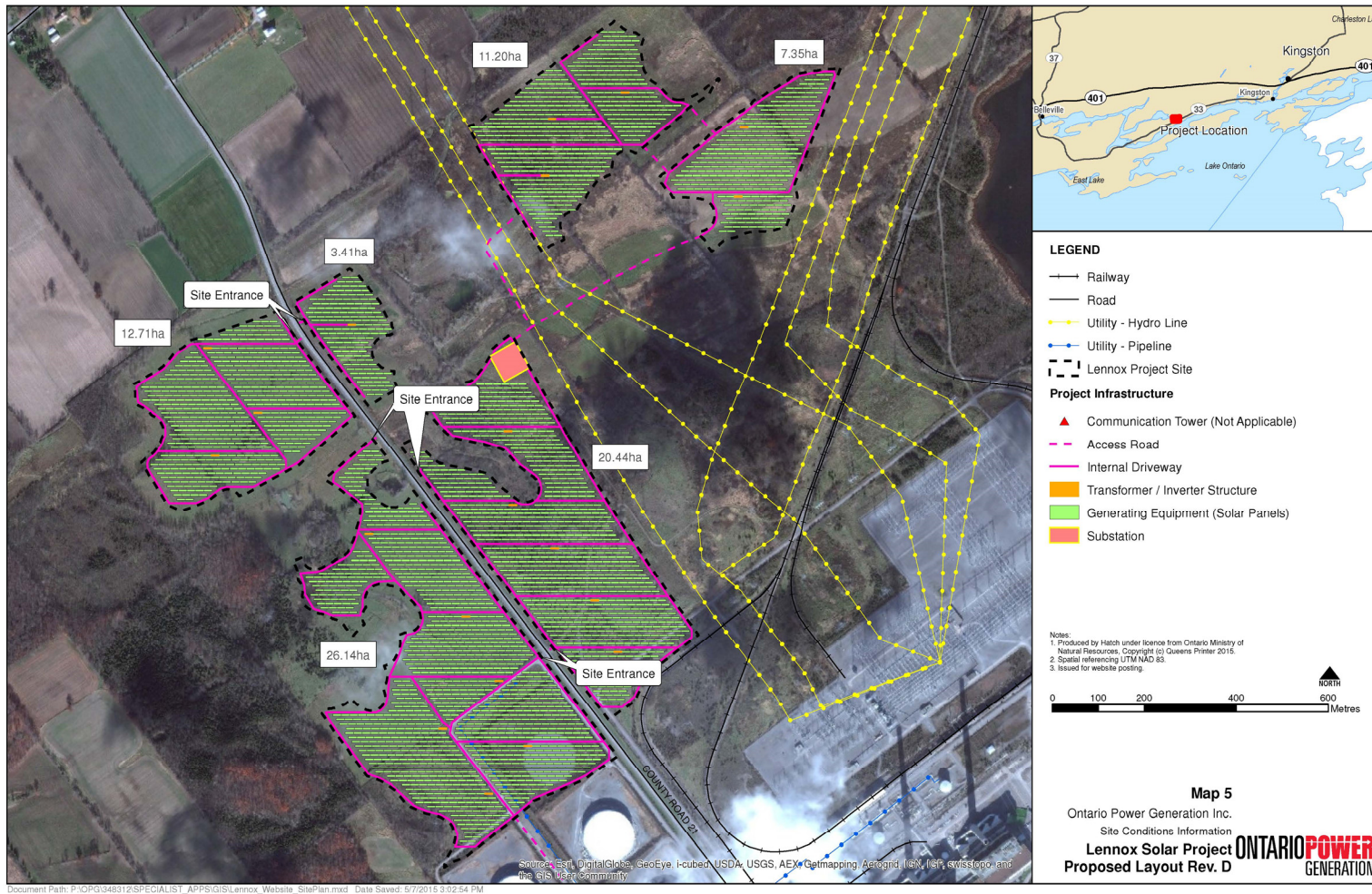


Site Considerations Maps





Site Considerations Maps





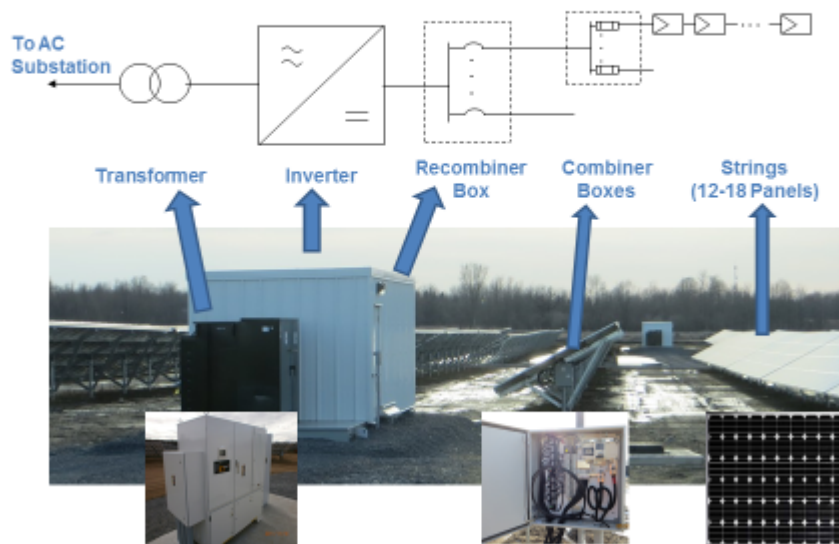
Renewable Energy Approval (REA)

- O.Reg. 359/09 under the *Environmental Protection Act*
- Required approval from the Ministry of the Environment and Climate Change (MOECC)
- Proposed Solar Project classified as a Class 3 Solar Facility
- Recently completed Draft Project Description available for review
- Initiated preliminary environmental investigations underway within an area that extends 300 m from the expected extent of the Project Location
 - Natural Heritage
 - Surface Water
 - Species at Risk
 - Archaeology
 - Cultural Heritage
- A number of reports are prepared as part of the REA process. Some are available now and others will be issued throughout the process for public review and comments.

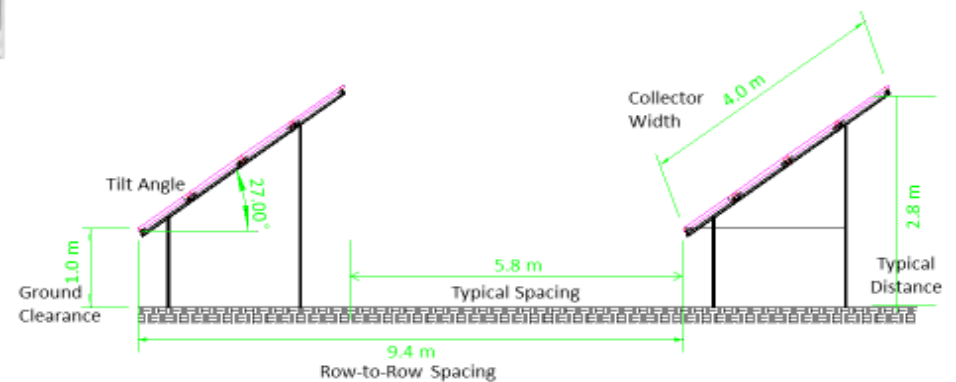


Ground Mounted Solar Panels

Solar Overview



Typical Spacing & Pitch





Environmental Studies

As part of the REA process we are undertaking a number of environmental studies. In order to ensure we are studying and valuing features of importance to you please tell us:

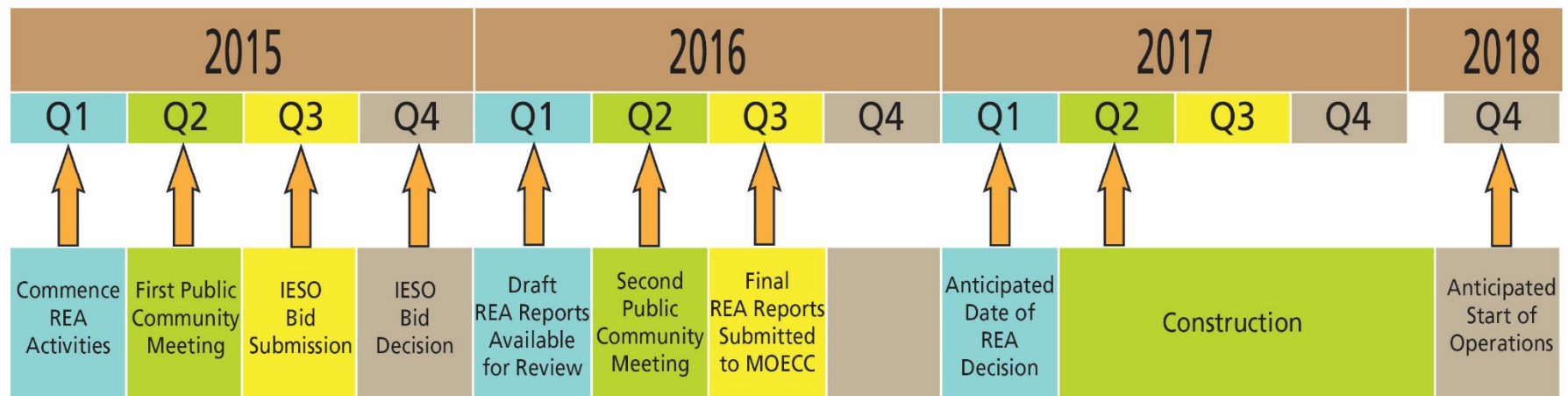
- What aspects of the local environment and your community are most important to you?
- Do you have concerns about the location of the proposed solar project?
- Do you have concerns about the construction of the proposed solar project?
- Do you have concerns about the operation of the proposed solar project?



Preliminary Project Schedule

ONTARIOPOWER
GENERATION

PRELIMINARY PROJECT SCHEDULE



* All dates are subject to change



Community Engagement Activities

- Consultation with Aboriginal communities, public, municipalities and review agencies is an integral part of the LRP and REA processes and are on-going
- Aboriginal and Stakeholder Community Engagement Plans are posted on the Project Website
- Second Public Community Meeting, if OPG is successful in LRP bid process, likely Q2 2016 to present results of REA studies
- OPG appreciates and encourages public input and welcomes questions and feedback throughout the process
- Please fill in a comment sheet before you leave or send to us by June 27, 2015
- We will post a written meeting summary and summary of comments received and responses to the project website during the second week of July
- Project information available at www.lennoxsolar.com
- Project E-mail: info@lennoxsolar.com